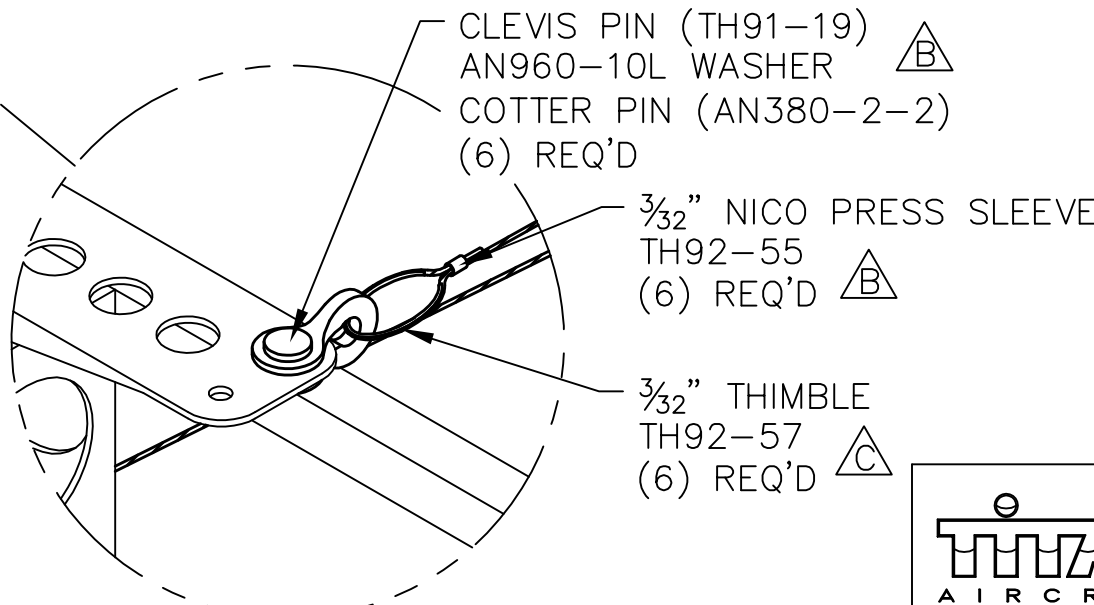
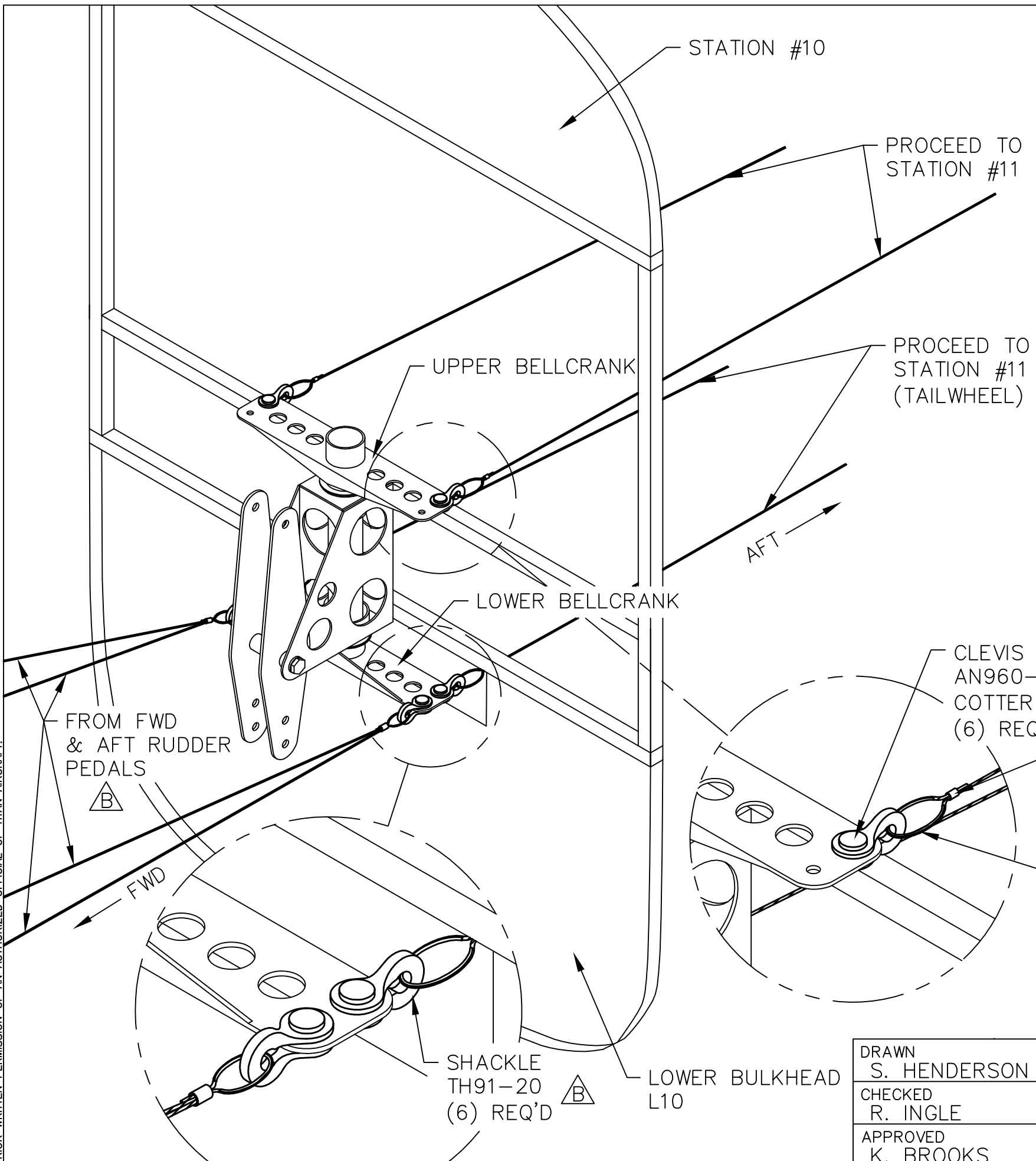


THIS DOCUMENT PROPRIETARY TO TITAN AIRCRAFT, AND IS NOT TO BE USED, CIRCULATED, REPRODUCED, COPIED, OR DISCLOSED IN ANY MANNER WITHOUT PRIOR WRITTEN PERMISSION OF AN AUTHORIZED OFFICIAL OF TITAN AIRCRAFT.



REVISIONS				
E.C. NO.	REV.	DESCRIPTION	BY	DATE
	A	DRAWING RELEASED	SH	12/05
0671	B	UPDATED DRAWING	SH	5/08
0937	C	UPDATED DRAWING	SH	4/09

NOTES:

- USE (6) SHACKLES, CLEVIS PINS, AND COTTER PINS, 4 WILL GO ON THE LOWER BELLCRANK AND THE OTHER 2 WILL GO ON THE UPPER BELLCRANK ON THE AFT SIDE, AS SHOWN TO THE LEFT.
- A SLOT NEEDS TO BE MADE IN LOWER BULKHEAD L10, SO THE LOWER BELLCRANK CAN PIVOT WITHOUT INTERFERENCE.
- USE THE CABLES COMING FROM THE TURNBUCKLES BETWEEN STATION #8 & STATION #9, TERMINATE ON THE FWD SIDE OF THE LOWER BELLCRANK, CUT EXCESS CABLE.
- ROUTE CABLES FROM THE LOWER BELLCRANK TO THE TAILWHEEL AT STATION #11 AND ASSEMBLE AS SHOWN ON (T51-04-INS-1303 - RUDDER CABLE ROUTING INSTRUCTIONAL #4).
- ONCE ROUTING TO TAILWHEEL IS COMPLETED USE THE EXCESS CABLES AND TERMINATE AT SHACKLE ON THE AFT SIDE OF THE UPPER BELLCRANK, PROCEED TO STATION #11 AS SHOWN ON (T51-05-INS-1303 - RUDDER CABLE ROUTING INSTRUCTIONAL #4.)

TITAN AIRCRAFT SUPPLY
 1419 STATE ROUTE 45 SOUTH
 AUSTINBURG, OHIO 44010

DRAWN S. HENDERSON		DATE 12/2/05	DETAIL NAME RUDDER CABLE ROUTING INSTRUCTIONAL #3	
CHECKED R. INGLE		DATE 8/17/09	SCALE N/A	PART NO.
APPROVED K. BROOKS		DATE 8/19/09	ASSEMBLY NAME	
			SHEET NO.	DRAWING NO. CR4
			DRAWING NO. B T51-05-INS-1302-C	