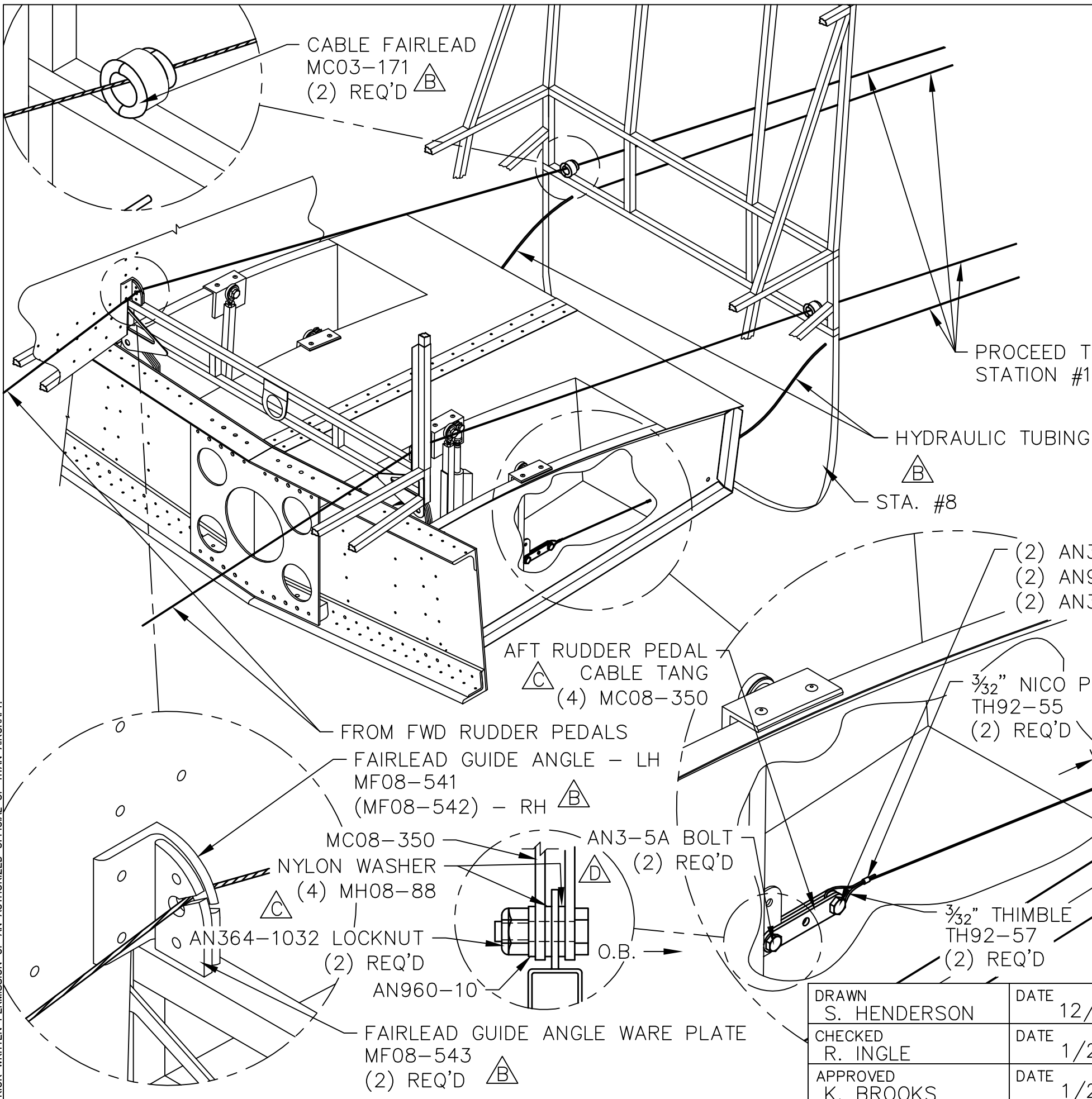


THIS DOCUMENT PROPRIETARY TO TITAN AIRCRAFT, AND IS NOT TO BE USED, CIRCULATED, REPRODUCED, COPIED, OR DISCLOSED IN ANY MANNER WITHOUT PRIOR WRITTEN PERMISSION OF AN AUTHORIZED OFFICIAL OF TITAN AIRCRAFT.



REVISIONS				
E.C. NO.	REV.	DESCRIPTION	BY	DATE
	A	DRAWING RELEASED	SH	12/05
0670	B	UPDATED DRAWING	SH	5/08
0730	C	MC08-350 & HARDWARE ADDED	SH	7/08
0766	D	SUPPLIED HARDWARE ADDED	SH	8/08
0940	E	CORRECTED P/N	SH	4/09

**NOTES:**  
 - THE CABLES FROM THE FWD RUDDER PEDALS SHOULD BE ROUTED THROUGH THE FAIRLEAD GUIDES AS SHOWN, THEN PROCEED TO STATION #10.  
 - THE FAIRLEAD GUIDE ANGLES SHOULD BE MOUNTED TO THE INNER COCKPIT PANELS AND SHOULD BE POSITIONED SO THE RIVETS WILL GO THROUGH THE HAT SECTIONS.  
 - FROM THE BACK WALL OF THE FOOT WELL TO STATION #8 A PIECE OF HYDRAULIC TUBING WILL NEED TO BE RUN AS A GUIDE TUBE FOR THE RUDDER CABLE FROM THE AFT RUDDER PEDALS.  
 - SEE DRAWING T51-08-INS-1713 FROM AFT RUDDER PEDAL MOUNTING INSTRUCTIONS.

**TITAN AIRCRAFT SUPPLY**  
 1419 STATE ROUTE 45 SOUTH  
 AUSTINBURG, OHIO 44010

DRAWN S. HENDERSON		DATE 12/2/05	DETAIL NAME RUDDER CABLE ROUTING INSTRUCTIONAL #2	
CHECKED R. INGLE		DATE 1/25/10	SCALE N/A	PART NO.
APPROVED K. BROOKS		DATE 1/26/10	ASSEMBLY NAME EARLY MODEL PLANES W/ REAR PEDAL CONVERSION	
			SHEET NO. 2 OF 5	DRAWING NO. CR3
			DRAWING NO. <b>B T51-05-INS-1301-E</b>	