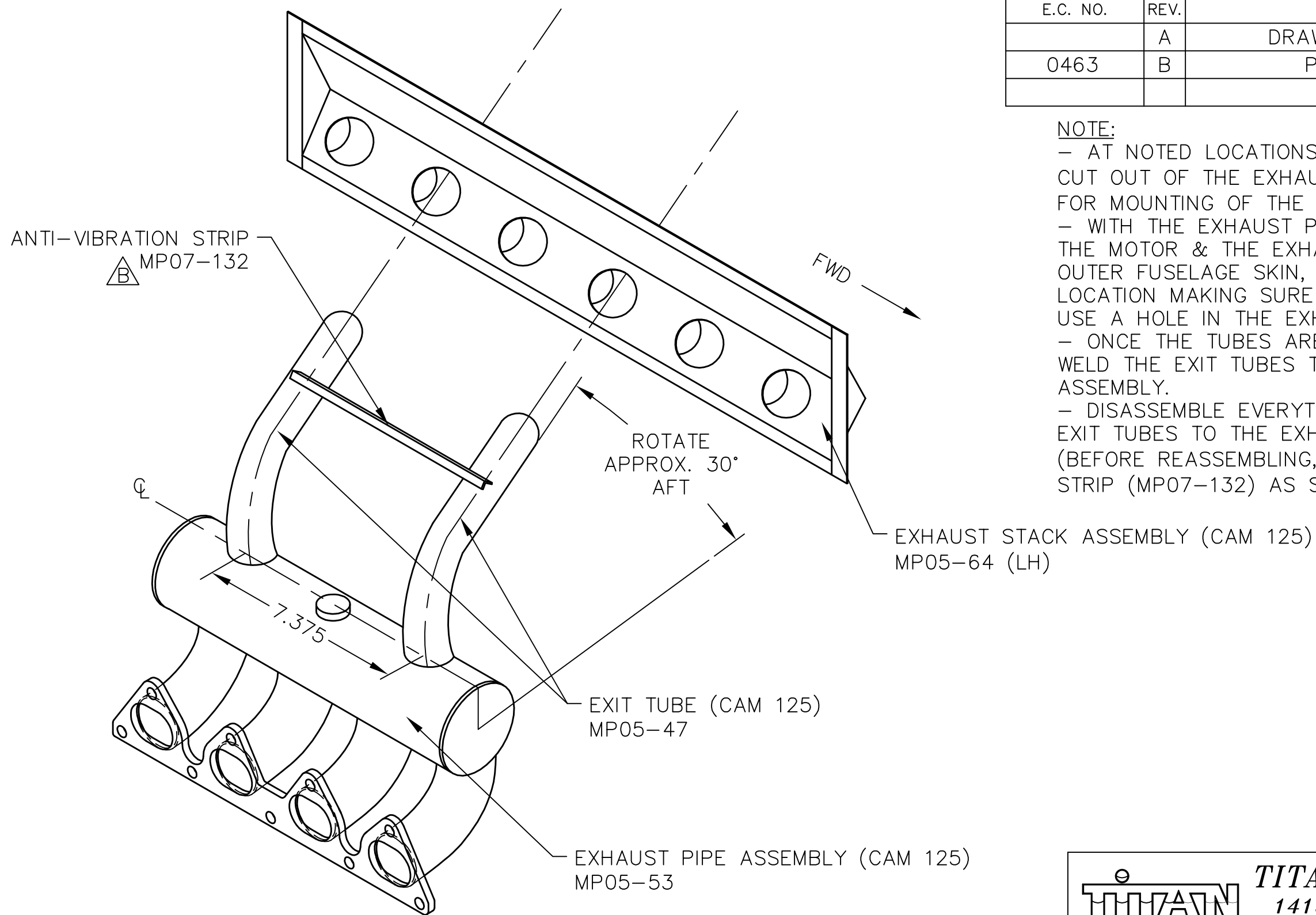


REVISIONS				
E.C. NO.	REV.	DESCRIPTION	BY	DATE
	A	DRAWING RELEASED	SH	8/05
0463	B	PART ADDED	SH	4/07



**NOTE:**  
 - AT NOTED LOCATIONS, 2 HOLES WILL NEED TO BE CUT OUT OF THE EXHAUST PIPE ASSEMBLY (MP05-53) FOR MOUNTING OF THE EXIT TUBES (MP05-47).  
 - WITH THE EXHAUST PIPE ASSEMBLY MOUNTED TO THE MOTOR & THE EXHAUST STACK CLECOED TO THE OUTER FUSELAGE SKIN, ALIGN EXIT TUBES TO DESIRED LOCATION MAKING SURE THAT THE TWO TUBES EACH USE A HOLE IN THE EXHAUST STACK.  
 - ONCE THE TUBES ARE PROPERLY ALIGNED TACK WELD THE EXIT TUBES TO THE EXHAUST PIPE ASSEMBLY.  
 - DISASSEMBLE EVERYTHING & FINISH WELDING THE EXIT TUBES TO THE EXHAUST PIPE ASSEMBLY. (BEFORE REASSEMBLING, WELD THE ANTI-VIBRATION STRIP (MP07-132) AS SHOWN.)

LH EXHAUST STACK ONLY

UNLESS OTHERWISE SPECIFIED:  
 - ALL DIMENSIONS ARE IN INCHES.  
 - APPLY STANDARD TOLERANCES:  
 0.00 = ±.030  
 0.000 = ±.010  
 ANGULAR ±1°  
 - BREAK ALL SHARP CORNERS

MATERIAL		AS NOTED
DRAWN	S. HENDERSON	DATE 8/3/05
CHECKED	RI	DATE 4/11/07
APPROVED	JW	DATE 4/27/07

**TITAN AIRCRAFT SUPPLY**  
 1419 STATE ROUTE 45 SOUTH  
 AUSTINBURG, OHIO 44010

DETAIL NAME EXHAUST SYSTEM INSTRUCTIONAL (CAM 125)  
 SCALE 1/4"=1" PART NO.  
 ASSEMBLY NAME  
 PART NO. DRAWING NO.  
 DRAWING NO. **B T51-05-INS-1223-B**

THIS DOCUMENT PROPRIETARY TO TITAN AIRCRAFT, AND IS NOT TO BE USED, CIRCULATED, REPRODUCED, COPIED, OR DISCLOSED IN ANY MANNER WITHOUT PRIOR WRITTEN PERMISSION OF AN AUTHORIZED OFFICIAL OF TITAN AIRCRAFT.