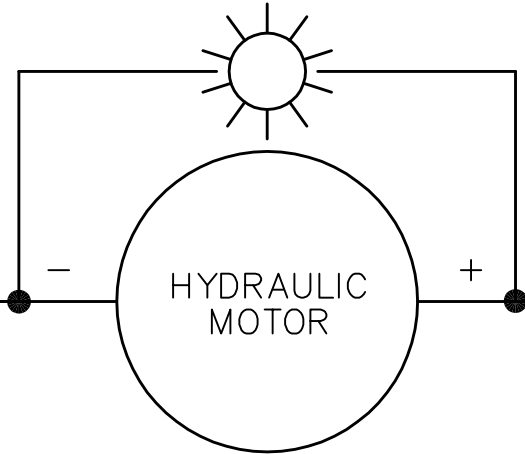




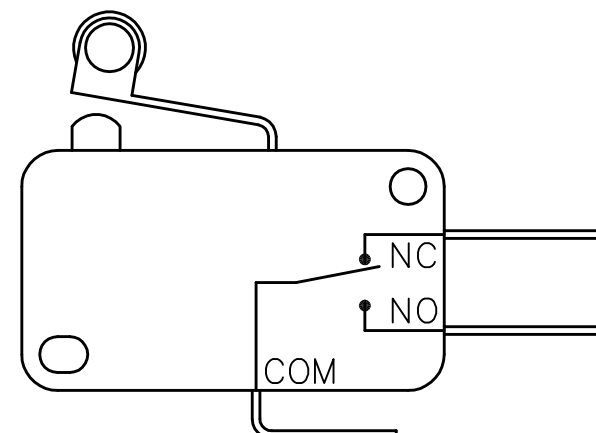
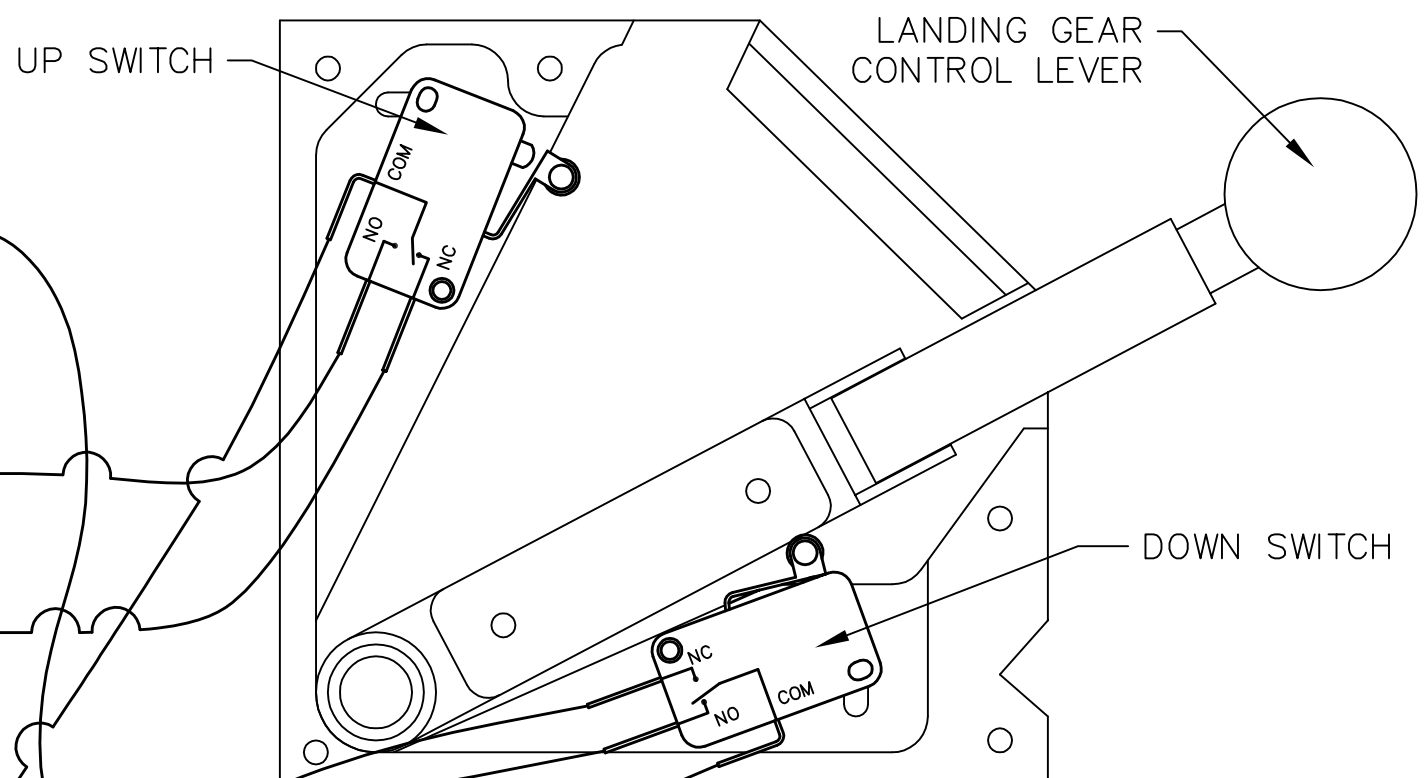
**NOTE:**  
 -ALL WIRES EXCEPT THOSE GOING TO THE SAFETY SWITCHES, THROTTLE SWITCH, GEAR WARNING HORN, AND THE LIGHT EMITTING DIODES ARE #14 AWG (2,5MM<sup>2</sup>)  
 -WIRES FOR SAFETY SWITCHES, THROTTLE SWITCH, GEAR WARNING HORN, AND LIGHT EMITTING DIODES CAN BE AS SMALL AS #20 AWG (0,5MM<sup>2</sup>)  
 -WIRE COLOR IS NOT IMPORTANT AND IS AT THE BUILDERS DISCRETION. IT IS IMPORTANT, HOWEVER, TO ENSURE THE USE OF THE PROPER GAUGE OF WIRE. WE RECOMMEND LABELING BOTH ENDS OF EACH WIRE TO MAKE ANY FUTURE TROUBLESHOOTING OR CORRECTIVE MAINTENANCE EASIER.

GEAR IN TRANSITION LAMP OR MOTOR RUNNING LAMP

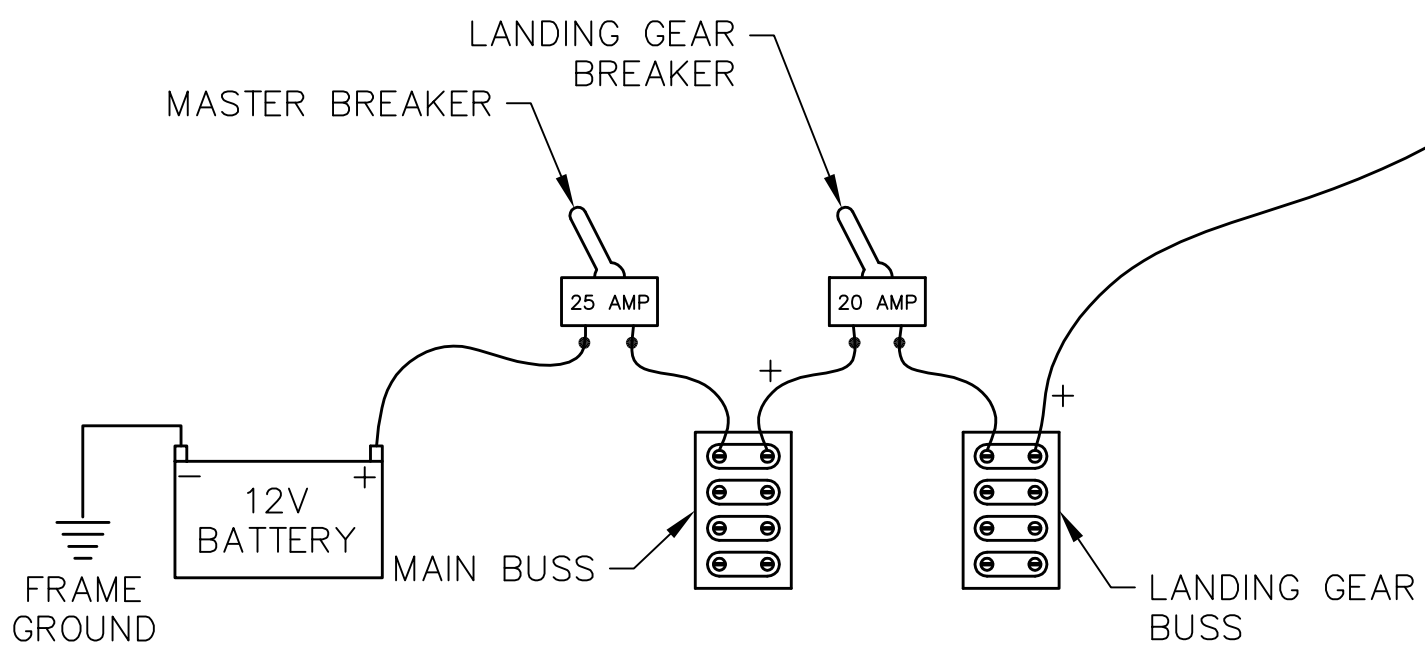


△ RUN WIRE TO THE R/L AND TAIL WHEEL UP SWITCH COMMON TERMINALS.

△ RUN WIRE TO THE R/L AND TAIL WHEEL DOWN SWITCH N.C TERMINALS.



NC - NORMALLY CLOSED  
 NO - NORMALLY OPEN  
 COM - COMMON



REVISIONS				
E.C. NO.	REV.	DESCRIPTION	BY	DATE
	A	RELEASED DRAWING	CE	10/04
0930	B	UPDATED DRAWING	SH	4/09
0987	C	CLARIFY WIRES	BH	9/09

**TITAN AIRCRAFT SUPPLY**  
 1419 STATE ROUTE 45 SOUTH  
 AUSTINBURG, OHIO 44010

DETAIL NAME ELECTRICAL DIAGRAM - CONTROL LEVER BOX	
SCALE N/A	PART NO.
ASSEMBLY NAME	
PART NO.	DRAWING NO. E4
DRAWING NO. <b>B T51-04-INS-1114-C</b>	

DRAWN B. HARE	DATE 9/21/09
CHECKED T. LONG	DATE 9/22/09
APPROVED J. SUTCH	DATE 9/22/09

THIS DOCUMENT PROPRIETARY TO TITAN AIRCRAFT, AND IS NOT TO BE USED, CIRCULATED, REPRODUCED, COPIED, OR DISCLOSED IN ANY MANNER WITHOUT PRIOR WRITTEN PERMISSION OF AN AUTHORIZED OFFICIAL OF TITAN AIRCRAFT.