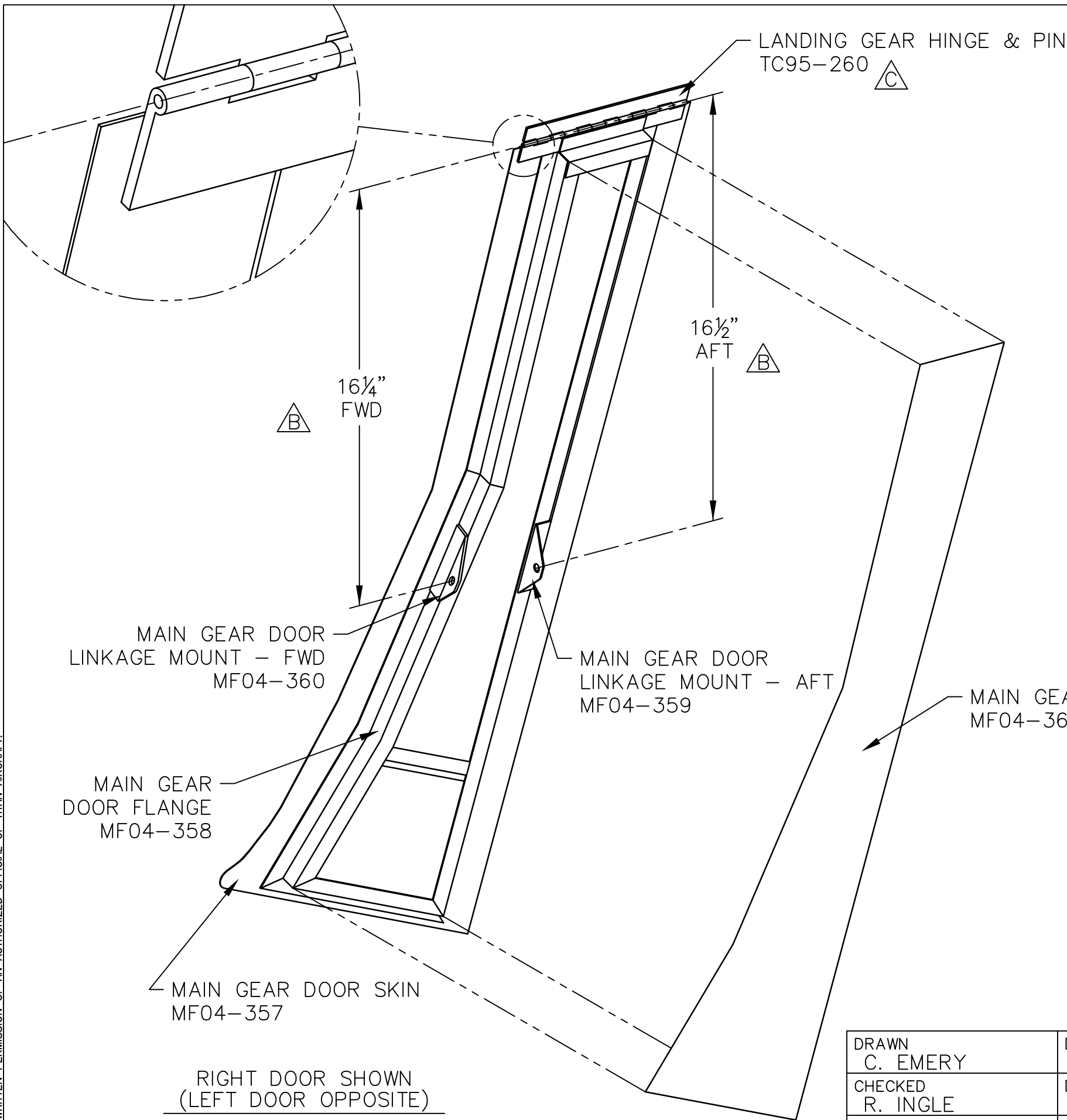


THIS DOCUMENT PROPRIETARY TO TITAN AIRCRAFT, AND IS NOT TO BE USED, CIRCULATED, REPRODUCED, COPIED, OR DISCLOSED IN ANY MANNER WITHOUT PRIOR WRITTEN PERMISSION OF AN AUTHORIZED OFFICIAL OF TITAN AIRCRAFT.



RIGHT DOOR SHOWN
(LEFT DOOR OPPOSITE)

REVISIONS				
E.C. NO.	REV.	DESCRIPTION	BY	DATE
	A	DRAWING RELEASED	CE	1/04
0801	B	UPDATED DRAWING	SH	11/08
1051	C	UPDATED DRAWING	BH	4/10

NOTE:

- BOND ONE FLANGE OF THE HINGE TO THE TOP OF THE MAIN GEAR DOOR SKIN.
- CUT THE MAIN GEAR DOOR FLANGE (MF04-358) FROM THE SUPPLIED MATERIAL TO FIT AS SHOWN.
- ATTACH THE MAIN GEAR DOOR FLANGES USING AD42ABS RIVETS. IT IS CRITICAL TO KEEP THE RIVET LINE 1/4" FROM THE EDGE OF THE MAIN DOOR SKIN ON THE LEADING AND TRAILING EDGES. THE RIVET LINE AT THE BOTTOM SHOULD BE 5/8" FROM THE EDGE.
- PLACE THE TOP MAIN GEAR DOOR FLANGE OVER THE FLANGE OF THE HINGE. BOND AND RIVET THE MAIN GEAR DOOR SKIN, FLANGE, AND HINGE TOGETHER.
- BOND AND RIVET THE MAIN GEAR INNER DOOR PANEL TO THE TOP OF THE FLANGES ONCE THEY ARE INSTALLED.
- ATTACH THE FWD AND AFT LINKAGE MOUNTS TO THE MAIN GEAR DOOR FLANGE ACCORDING TO THE DIMENSIONS ON DRAWING. (DIMENSIONS ARE TAKEN FROM THE CENTER OF THE HINGE PIN TO THE CENTER OF THE LINKAGE MOUNTS.)

TITAN AIRCRAFT SUPPLY
 1419 STATE ROUTE 45 SOUTH
 AUSTINBURG, OHIO 44010

DETAIL NAME		MAIN LANDING GEAR DOOR ASSEMBLY INS.	
SCALE	1/4"=1"	PART NO.	
ASSEMBLY NAME			
PART NO.		DRAWING NO. LG7	
DRAWING NO.		B T51-04-INS-1039-C	

DRAWN	C. EMERY	DATE	1/30/04
CHECKED	R. INGLE	DATE	5/11/10
APPROVED	K. BROOKS	DATE	5/12/10