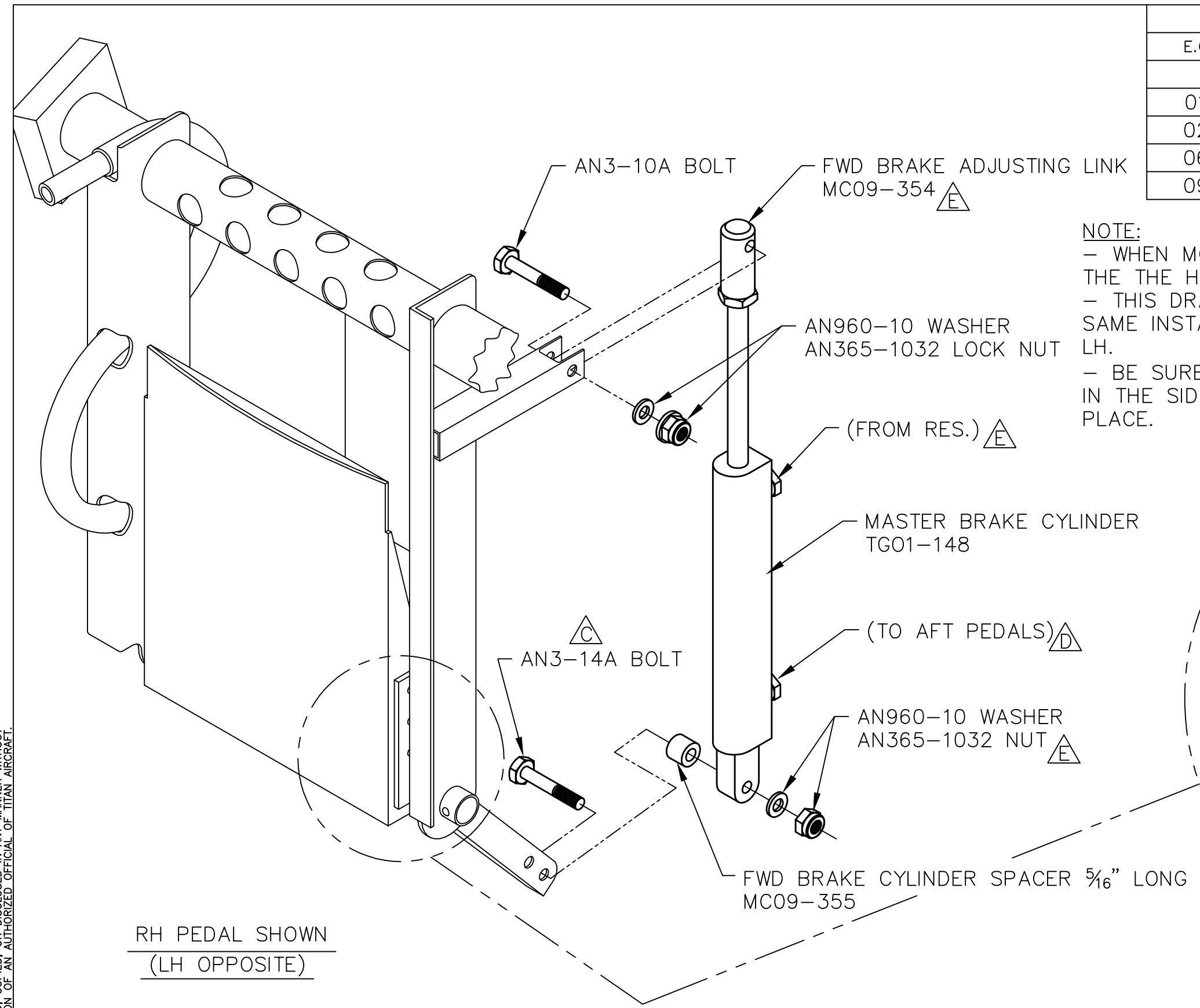
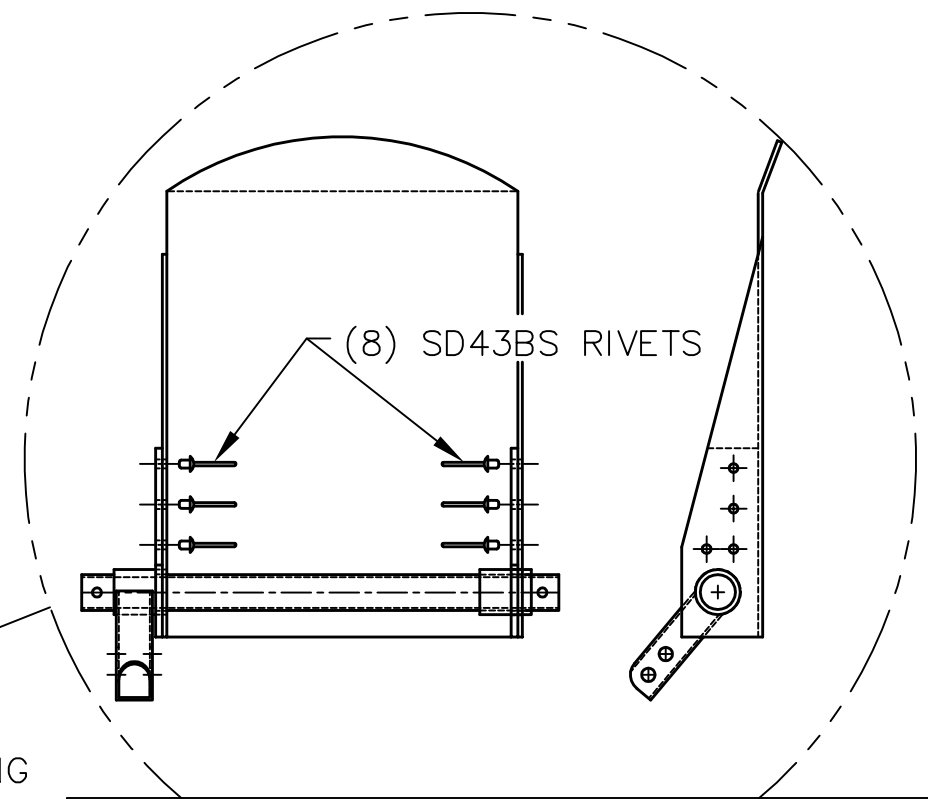


REVISIONS

E.C. NO.	REV.	DESCRIPTION	BY	DATE
	A	DRAWING RELEASED	CE	1/04
0187	B	CORRECTED BOLT SIZE	CE	12/05
0267	C	HARDWARE CHANGED	SH	5/06
0603	D	ROTATED CYLINDER 180°	SH	1/08
0907	E	ROTATED CYLINDER 180°	SH	3/09



NOTE:
 - WHEN MOUNTING THE BRAKE MASTER CYLINDER, MAKE SURE THE THE HYDRAULIC BRAKE LINE CONNECTIONS ARE FACING AFT.
 - THIS DRAWING REPRESENTS THE FWD BRAKE PEDAL - RH, THE SAME INSTALLATION WILL BE USED FOR THE FWD BRAKE PEDAL - LH.
 - BE SURE EACH FWD RUDDER PEDAL HAS (8) SD43BS RIVETS IN THE SIDE MOUNTS AS SHOWN BELOW. BOND AND RIVET IN PLACE.



RH PEDAL SHOWN
 (LH OPPOSITE)

TITAN AIRCRAFT SUPPLY
 1419 STATE ROUTE 45 SOUTH
 AUSTINBURG, OHIO 44010

DETAIL NAME		MASTER BRAKE CYLINDER INSTALLATION	
SCALE	1/2"=1"	PART NO.	
ASSEMBLY NAME			
PART NO.		DRAWING NO. F21	
DRAWING NO.		B T51-03-INS-1005-E	

DRAWN C. EMERY	DATE 1/19/04
CHECKED R. INGLE	DATE 1/25/10
APPROVED K. BROOKS	DATE 1/26/10

THIS DOCUMENT PROPRIETARY TO TITAN AIRCRAFT, AND IS NOT TO BE USED, CIRCULATED, REPRODUCED, COPIED, OR DISCLOSED IN ANY MANNER WITHOUT PRIOR WRITTEN PERMISSION OF AN AUTHORIZED OFFICIAL OF TITAN AIRCRAFT.