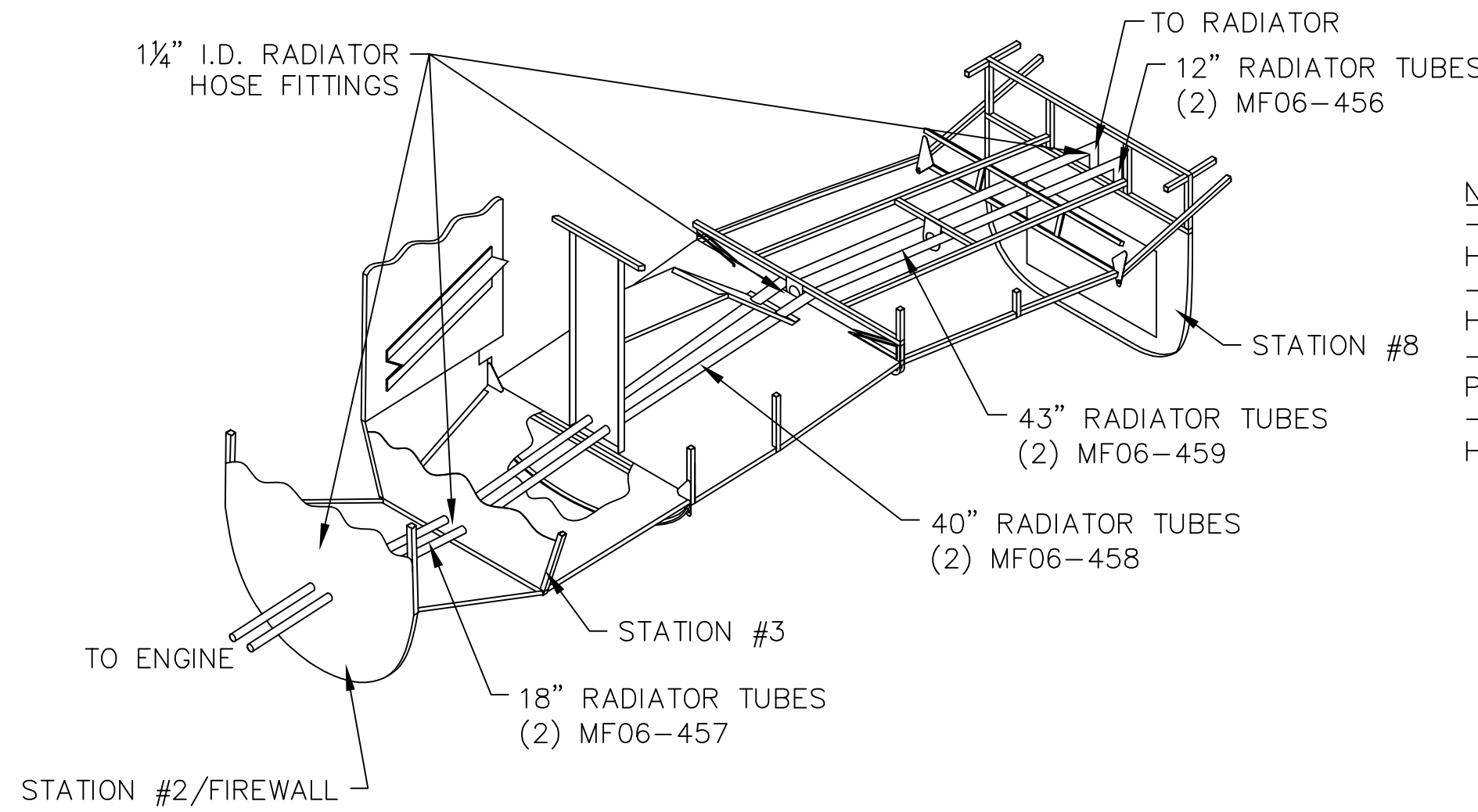
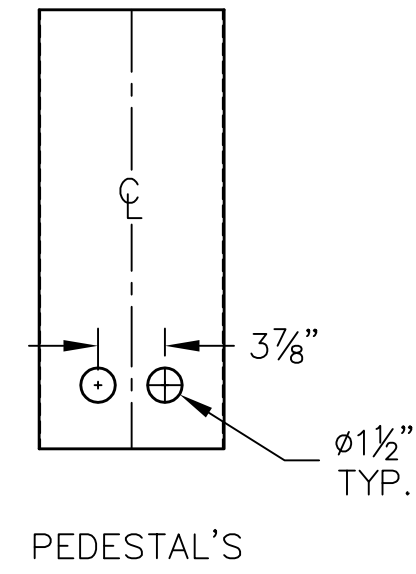
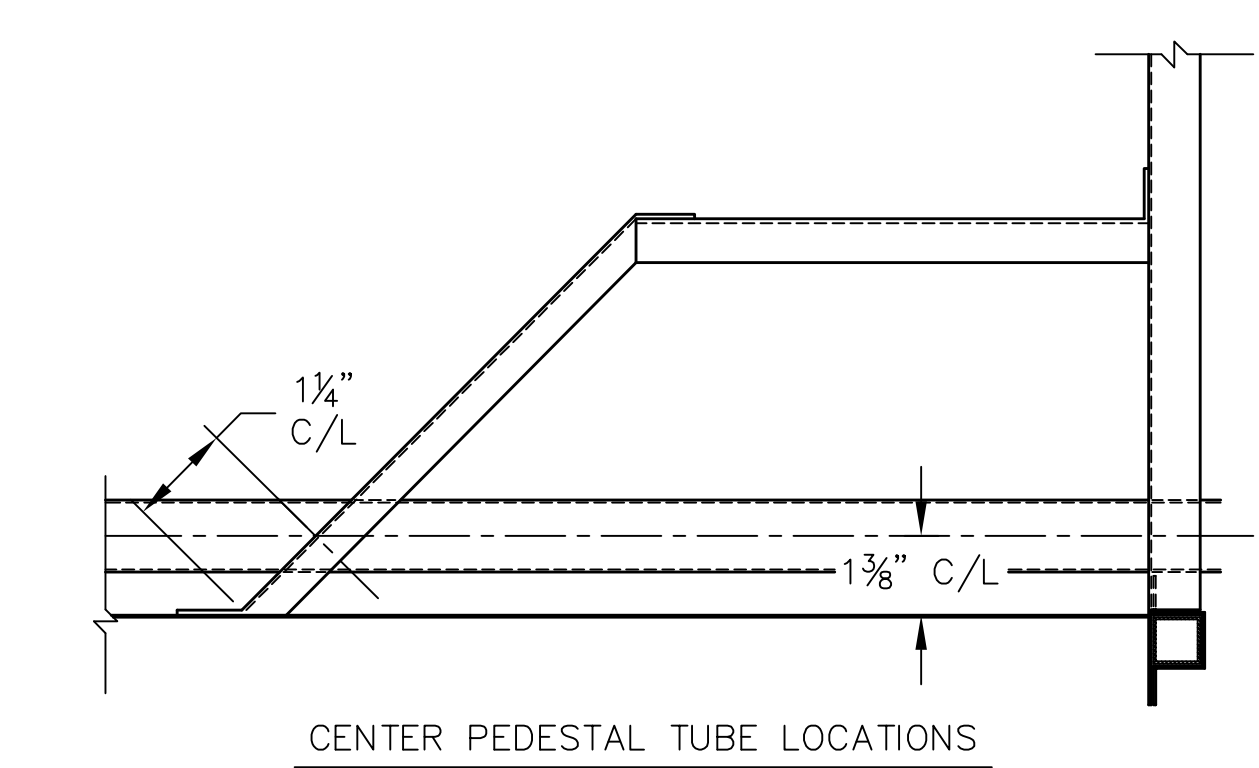


REVISIONS

E.C. NO.	REV.	DESCRIPTION	BY	DATE
	A	DRAWING RELEASED	CE	1/04
0953	B	UPDATED DRAWING	SH	5/09



NOTES:
 - REFER TO DRAWING T51-06-INS-1487 FOR RADIATOR TUBE HOLE PLACEMENT IN STATION #2/FIREWALL.
 - REFER TO DRAWING T51-04-INS-1041 FOR RADIATOR TUBE HOLE PLACEMENT IN STATION #3.
 - USE 1 1/4" RUBBER GROMMETS (MH08-108) IN ALL HOLES TO PROTECT TUBES FROM ALUMINUM.
 - IT IS RECOMMENDED TO WRAP THE RADIATOR TUBES WITH HEAT WRAP TO REDUCE CABIN HEAT. (NOT SUPPLIED)



TITAN AIRCRAFT SUPPLY
 1419 STATE ROUTE 45 SOUTH
 AUSTINBURG, OHIO 44010

DETAIL NAME		COOLANT LINE ROUTING INSTRUCTIONAL	
SCALE	N/A	PART NO.	
ASSEMBLY NAME			
PART NO.		DRAWING NO. F23	
DRAWING NO. B T51-04-INS-1000-B			

DRAWN C. EMERY	DATE 1/13/04
CHECKED R. INGLE	DATE 7/1/09
APPROVED K. BROOKS	DATE 8/7/09

THIS DOCUMENT PROPRIETARY TO TITAN AIRCRAFT, AND IS NOT TO BE USED, CIRCULATED, REPRODUCED, COPIED, OR DISCLOSED IN ANY MANNER WITHOUT PRIOR WRITTEN PERMISSION OF AN AUTHORIZED OFFICIAL OF TITAN AIRCRAFT.