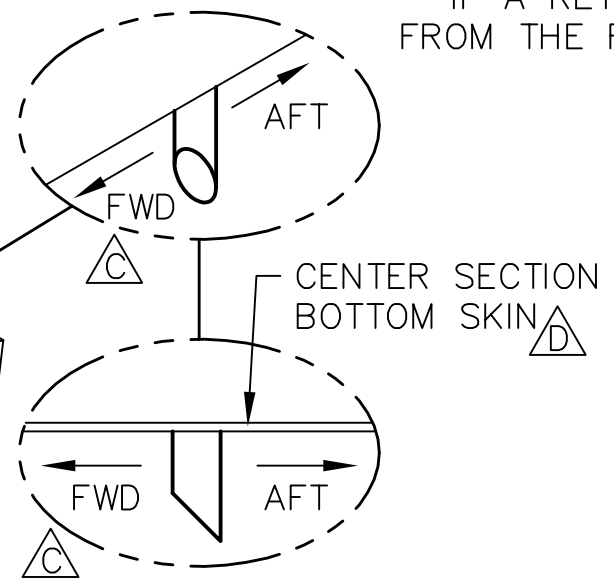
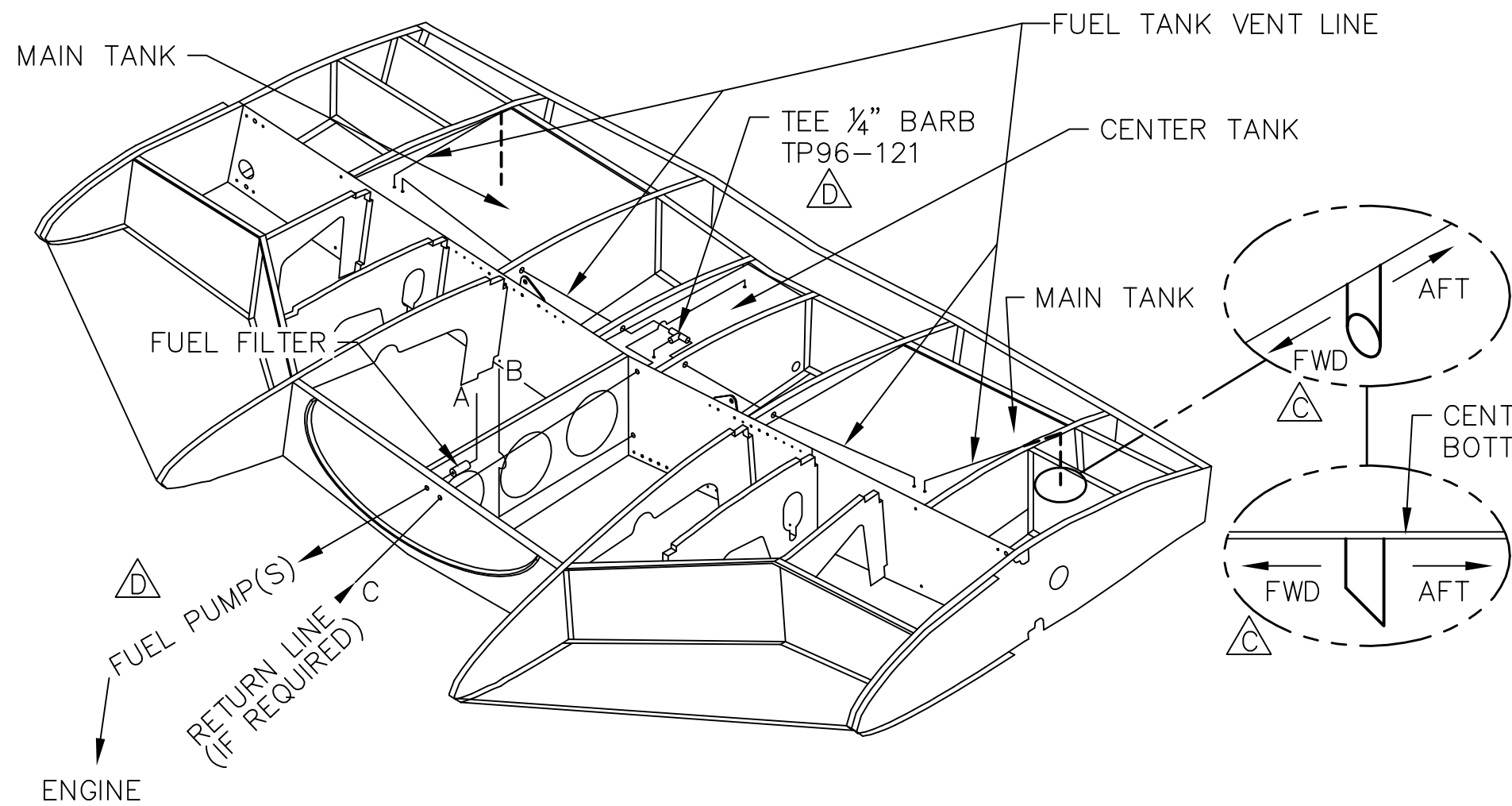
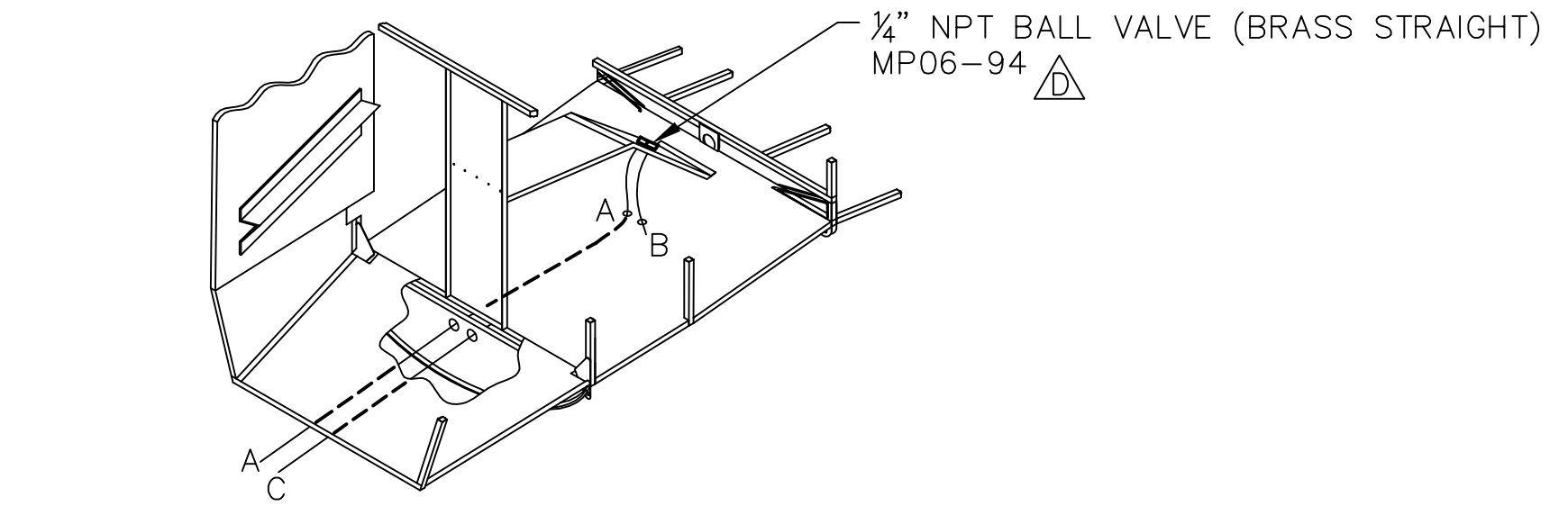


THIS DOCUMENT PROPRIETARY TO TITAN AIRCRAFT, AND IS NOT TO BE USED, CIRCULATED, REPRODUCED, COPIED, OR DISCLOSED IN ANY MANNER WITHOUT PRIOR WRITTEN PERMISSION OF AN AUTHORIZED OFFICIAL OF TITAN AIRCRAFT.



REVISIONS				
E.C. NO.	REV.	DESCRIPTION	BY	DATE
	A	DRAWING RELEASED	CE	01/04
0375	B	NOTES ADDED	SH	11/06
0659	C	NOTES CORRECTED	SH	3/08
0785	D	DRAWING CHANGED	SH	10/08

NOTES:  
 - ROUTE THE FUEL & VENT LINES AS SHOWN ON DRAWING T51-07-INS-1631.  
 - IF NOT DONE ALREADY, DRILL A HOLE IN THE BOTTOM CENTER SECTION SKINS FOR THE MAIN FUEL TANK VENT LINES. (HOLES DO NOT NEED TO BE MUCH BIGGER THAN THE VENT LINES.)  
 - THE MAIN TANK VENT LINES WILL NEED TO BE TERMINATED APPROX. 1/4" PAST THE BOTTOM CENTER SECTION SKINS. CUT LINES AT AN APPROX. 45° ANGLE AS SHOWN.  
 - THE MAIN FUEL LINE FROM THE CENTER TANK, NEEDS TO BE RAN TO THE SHUT OFF VALVE-FUEL FILTER-FUEL PUMP(S)-ENGINE.  
 - IF A RETURN LINE IS REQUIRED, THE LINE SHOULD BE RAN FROM THE REGULATOR BACK TO THE CENTER TANK.

**TITAN AIRCRAFT SUPPLY**  
 1419 STATE ROUTE 45 SOUTH  
 AUSTINBURG, OHIO 44010

DRAWN C. EMERY		DATE 1/08/04		DETAIL NAME FUEL LINE ROUTING INST. FOR ROTAX 914 OR F.I. ENGINES	
CHECKED		DATE		SCALE 1/16"=1" PART NO.	
APPROVED		DATE		ASSEMBLY NAME	
PART NO.			DRAWING NO. CS8		
DRAWING NO. <b>B T51-04-INS-0996-D</b>					