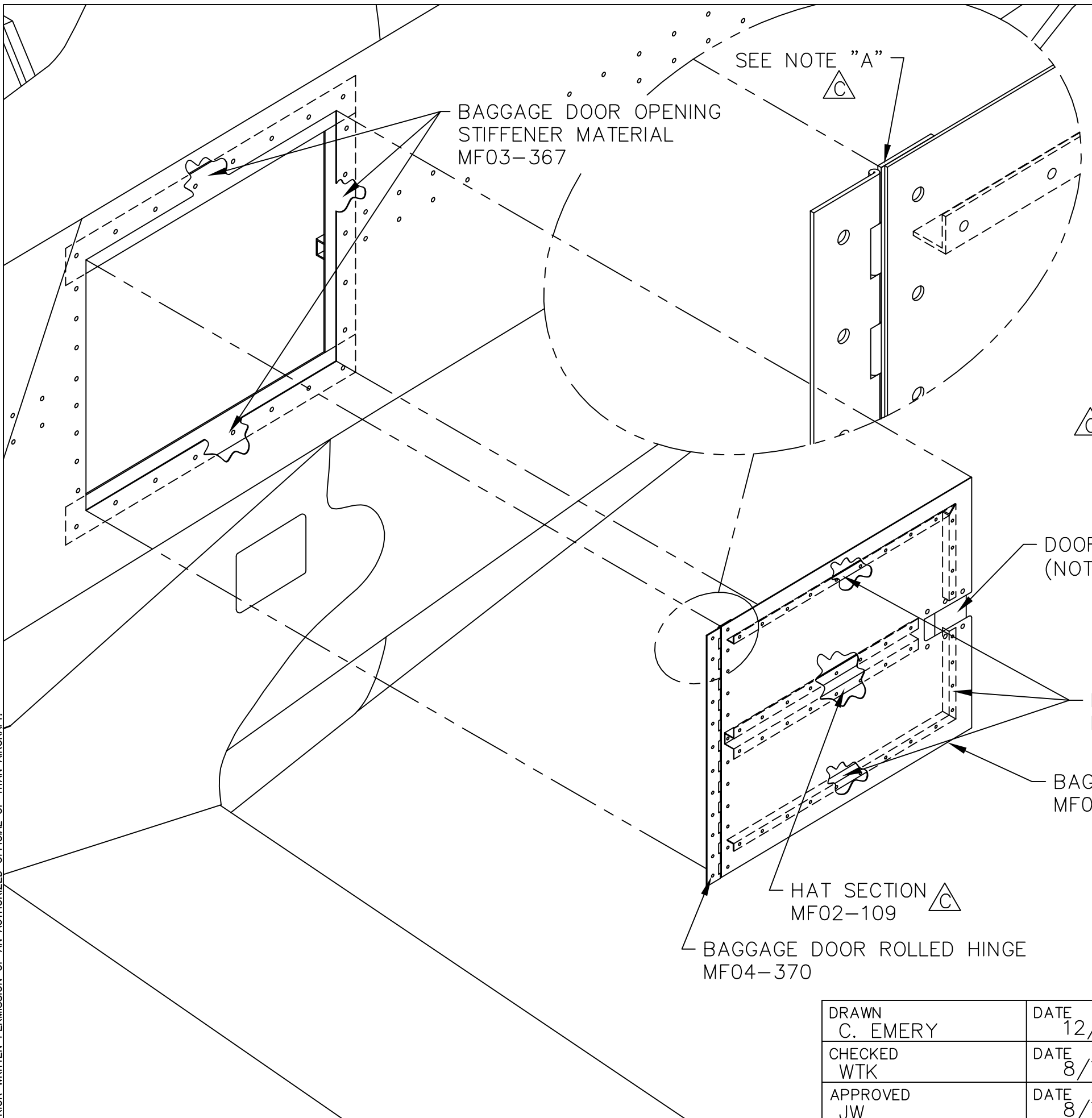


THIS DOCUMENT PROPRIETARY TO TITAN AIRCRAFT, AND IS NOT TO BE USED, CIRCULATED, REPRODUCED, COPIED, OR DISCLOSED IN ANY MANNER WITHOUT PRIOR WRITTEN PERMISSION OF AN AUTHORIZED OFFICIAL OF TITAN AIRCRAFT.



REVISIONS				
E.C. NO.	REV.	DESCRIPTION	BY	DATE
	A	DRAWING RELEASED	CE	12/03
0077	B	SIMPLIFIED DRAWING	CE	3/04
0737	C	NOTES ADDED	SH	7/08

NOTE:

- BAGGAGE DOOR IS TO BE ON LEFT SIDE OF AIRCRAFT ONLY.
- HOLE SIZE 14" x 12" NEEDS TO BE CUT OUT OF "E" SKIN BETWEEN STATIONS 8 & 9 FOR AFT BAGGAGE COMPARTMENT.
- CUT A STANDARD PIECE OF 1/2" HAT SECTION TO FIT BETWEEN PIANO HINGE AND LATCH TO USE AS A CENTER DOOR STIFFENER.
- QUARTER TURN FASTENERS, SCREWS OR LATCHES CAN BE USED TO SECURE THE DOOR IN THE CLOSED POSITION.
- BE SURE ROLLED SIDE OF HINGE IS FACING INWARD WHEN MOUNTING DOOR FOR BEST SEAL.

NOTE "A"

- BE SURE TO LEAVE A GAP FOR THE HINGE TO MOVE.

TITAN AIRCRAFT SUPPLY
 1419 STATE ROUTE 45 SOUTH
 AUSTINBURG, OHIO 44010

DETAIL NAME		AFT BAGGAGE DOOR INSTRUCTIONAL	
SCALE 3/16"=1"	PART NO.		
ASSEMBLY NAME		OPTIONAL	
PART NO.	DRAWING NO. F44		
DRAWING NO.	B T51-03-INS-0977-C		

DRAWN C. EMERY	DATE 12/18/03
CHECKED WTK	DATE 8/7/08
APPROVED JW	DATE 8/7/08