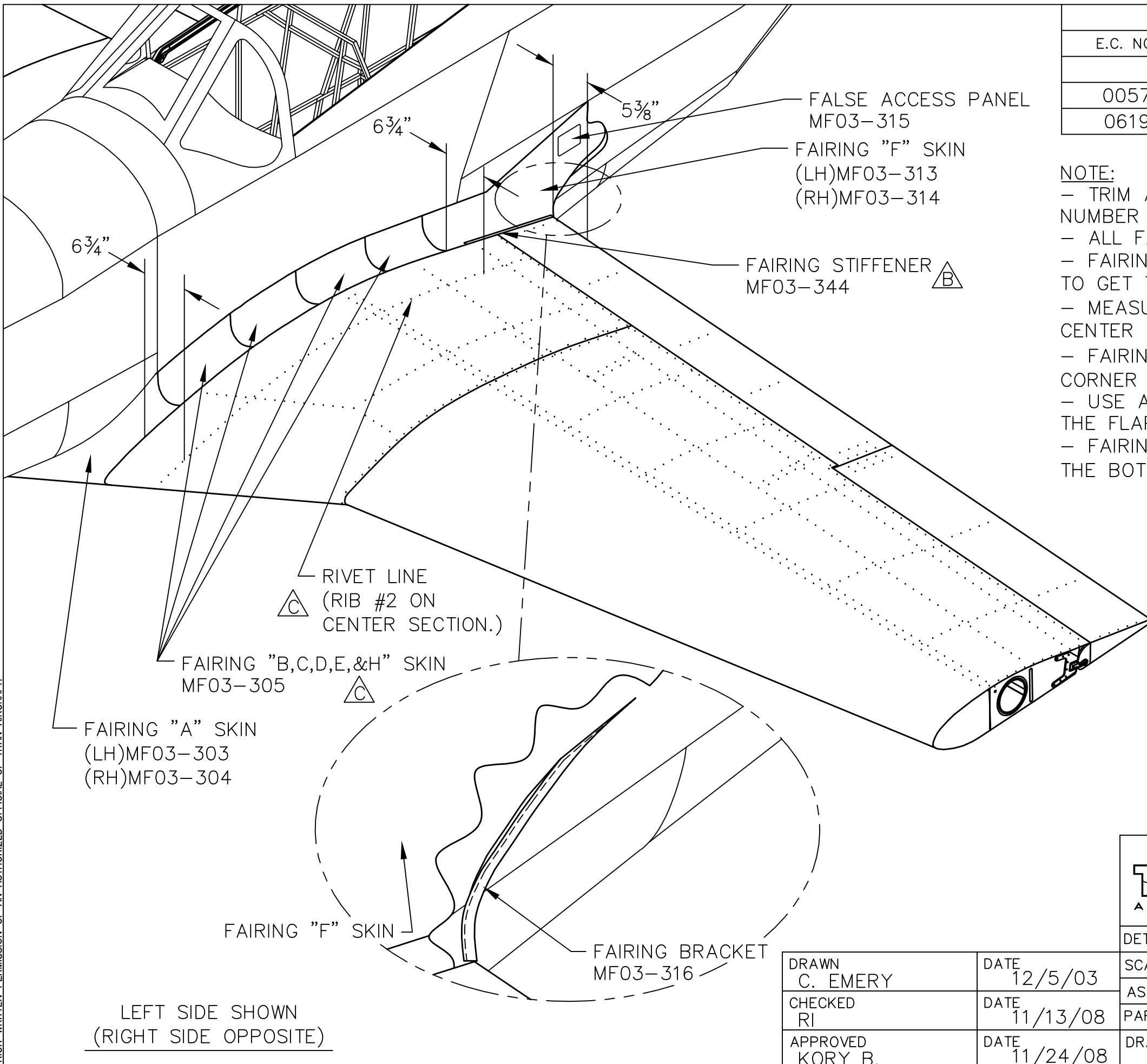


THIS DOCUMENT PROPRIETARY TO TITAN AIRCRAFT, AND IS NOT TO BE USED, CIRCULATED, REPRODUCED, COPIED, OR DISCLOSED IN ANY MANNER WITHOUT PRIOR WRITTEN PERMISSION OF AN AUTHORIZED OFFICIAL OF TITAN AIRCRAFT.




REVISIONS				
E.C. NO.	REV.	DESCRIPTION	BY	DATE
	A	DRAWING RELEASED	CE	12/03
0057	B	ADDED FAIRING STIFFENER	CE	12/03
0619	C	NOTES ADDED	SH	2/08

**NOTE:**

- TRIM AND FIT FAIRINGS B, C, D, & E FROM PART NUMBER MF03-305.
- ALL FAIRING SKINS OVERLAP EACH AFT FAIRING SKIN.
- FAIRING "F" SKIN NEEDS TO BE CLECOED IN PLACE FIRST TO GET THE RIGHT ALIGNMENT.
- MEASURE 6 3/4" FROM RIVET LINE ON RIB #2 IN THE CENTER SECTION TO PLACE FAIRING SKINS "A"- "E".
- FAIRING "F" SKIN WILL MEASURE 6 3/4" AT THE FORWARD CORNER AND 5 3/8" FROM WHERE IT FIRST MEETS THE FLAP.
- USE A STRAIGHT EDGE TO EXTEND THE REF. LINE ONTO THE FLAPS.
- FAIRING "A" SKIN WILL WRAP COMPLETELY AROUND TO THE BOTTOM OF THE WING. (REFER TO T51-03-INS-0962)

- THE FAIRING BRACKET (MF03-316) IS USED TO HOLD FAIRING "F AND "G" SKINS TOGETHER AT THE TRAILING EDGE, WHICH ALSO ACTS AS A STIFFENER.
- (RIVET LINES SHOWN ARE NOT EXACT, BUT ARE A GOOD REFERENCE OF THE LAYOUT.)
- ALSO REFER TO T51-03-INS-0991 FOR FAIRING "F" & FAIRING "G" INSTALLATION.

LEFT SIDE SHOWN  
(RIGHT SIDE OPPOSITE)

 <b>TITAN AIRCRAFT SUPPLY</b> 1419 STATE ROUTE 45 SOUTH AUSTINBURG, OHIO 44010	
DETAIL NAME WING FAIRING LOCATION	
DRAWN C. EMERY	DATE 12/5/03
CHECKED RI	DATE 11/13/08
APPROVED KORY B.	DATE 11/24/08
SCALE 1/16"=1" PART NO.	
ASSEMBLY NAME	
PART NO.	DRAWING NO.
DRAWING NO. <b>B T51-03-INS-0961-C</b>	