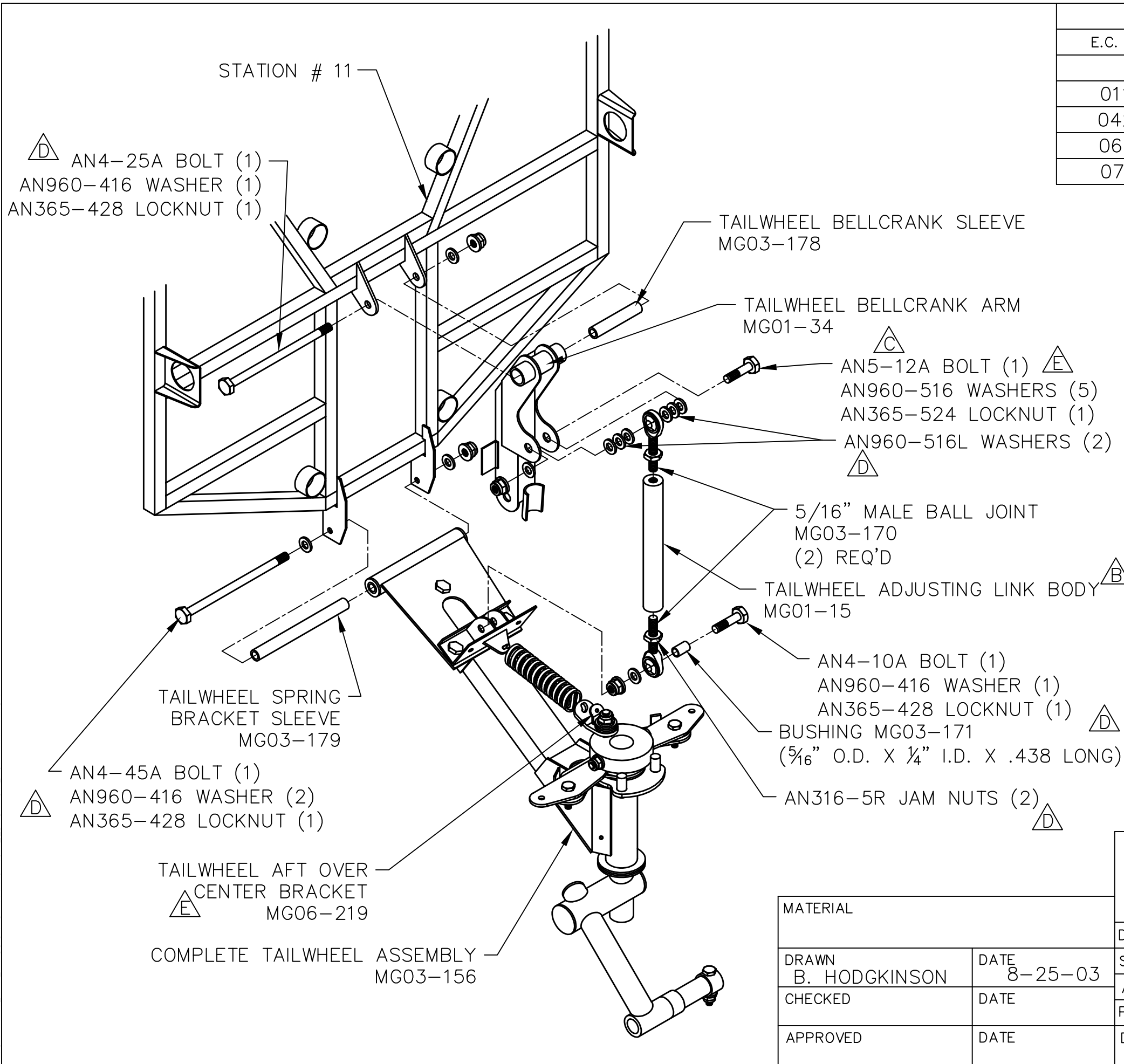


THIS DOCUMENT PROPRIETARY TO TITAN AIRCRAFT, AND IS NOT TO BE USED, CIRCULATED, REPRODUCED, COPIED, OR DISCLOSED IN ANY MANNER WITHOUT PRIOR WRITTEN PERMISSION OF AN AUTHORIZED OFFICIAL OF TITAN AIRCRAFT.



REVISIONS				
E.C. NO.	REV.	DESCRIPTION	BY	DATE
	A	DRAWING RELEASED	BH	7/03
0117	B	ADDED PART NUMBERS	CE	8/04
0427	C	BOLT CHANGED	SH	2/07
0613	D	HARDWARE UPDATED	SH	2/08
0741	E	HARDWARE CORRECTED	SH	7/08

NOTES:

- TIGHTEN THE TAILWHEEL BELLCRANK ARM (MG01-34) AS SHOWN, THE TAILWHEEL BELLCRANK ARM PIVOTS ON THE TAILWHEEL BELLCRANK SLEEVE (MG03-178). MAKE SURE THE BELLCRANK ARM SWINGS FREELY ON (MG03-178) WITH THE NUT AND BOLT TIGHT.
- TIGHTEN THE COMPLETE TAILWHEEL ASSEMBLY (MG03-156) TO THE BOTTOM OF STATION # 11 WITH HARDWARE SHOWN. THE TAILWHEEL ASSEMBLY PIVOTS ON THE TAILWHEEL BRACKET SLEEVE (MG03-179). MAKE SURE THE TAILWHEEL SPRING BRACKET SWINGS FREELY WITH THE NUT AND BOLT TIGHT.
- ADJUST THE BALL JOINTS IN THE TAILWHEEL ADJUSTING LINK BODY (MG01-15), SO THE SYSTEM LOCKS OVER CENTER.
- REFER TO DRAWING T51-06-INS-1522 FOR THE LAYOUT OF PARTS IN THE COMPLETE TAILWHEEL ASSEMBLY (MG03-156).


TITAN AIRCRAFT SUPPLY
 1419 STATE ROUTE 45 SOUTH
 AUSTINBURG, OHIO 44010

MATERIAL		DETAIL NAME AS NOTED	
DRAWN B. HODGKINSON	DATE 8-25-03	SCALE 1/4"=1"	PART NO. AS NOTED
CHECKED	DATE	ASSEMBLY NAME TAILWHEEL INSTALLATION INSTRUCTIONAL	
APPROVED	DATE	PART NO.	DRAWING NO.
		DRAWING NO. B T51-03-INS-0816-E	