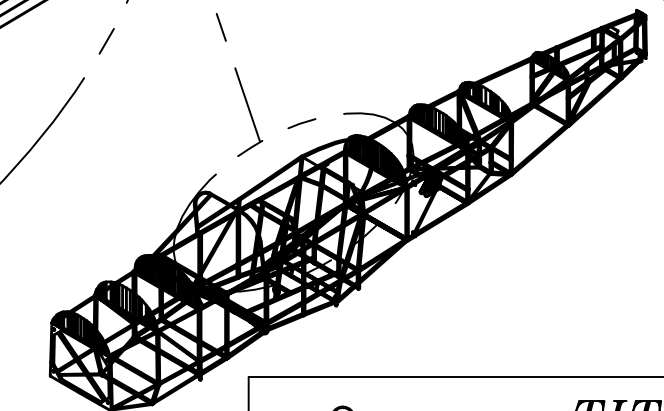
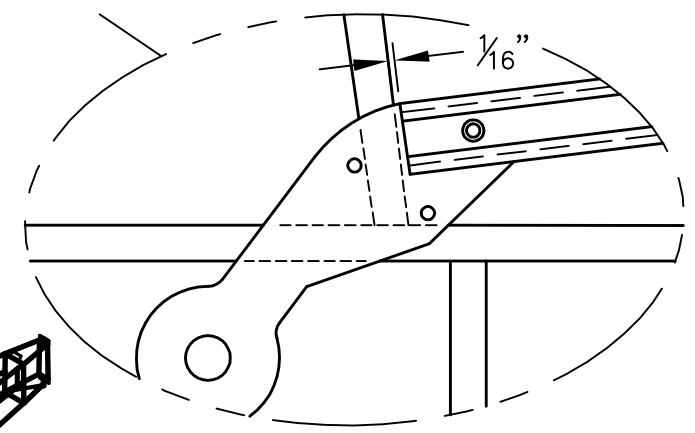
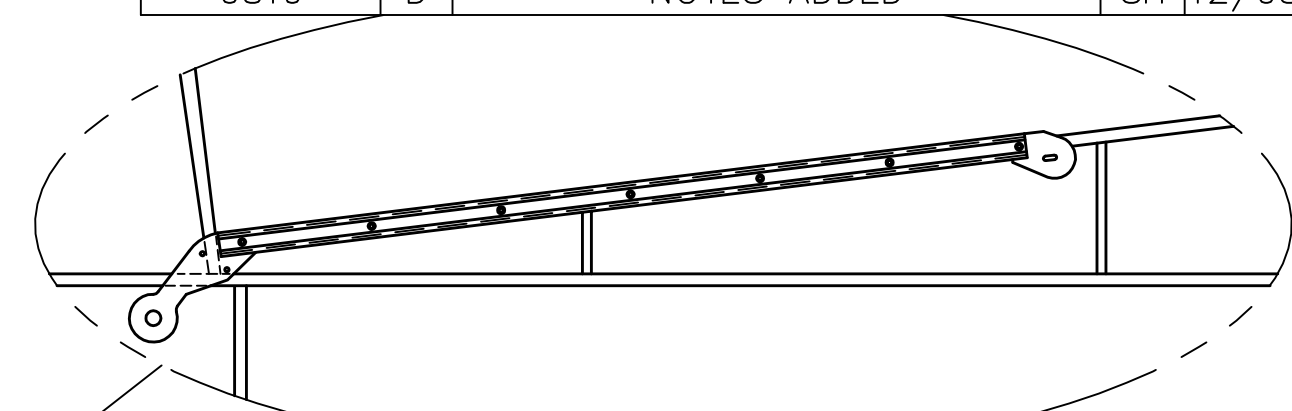
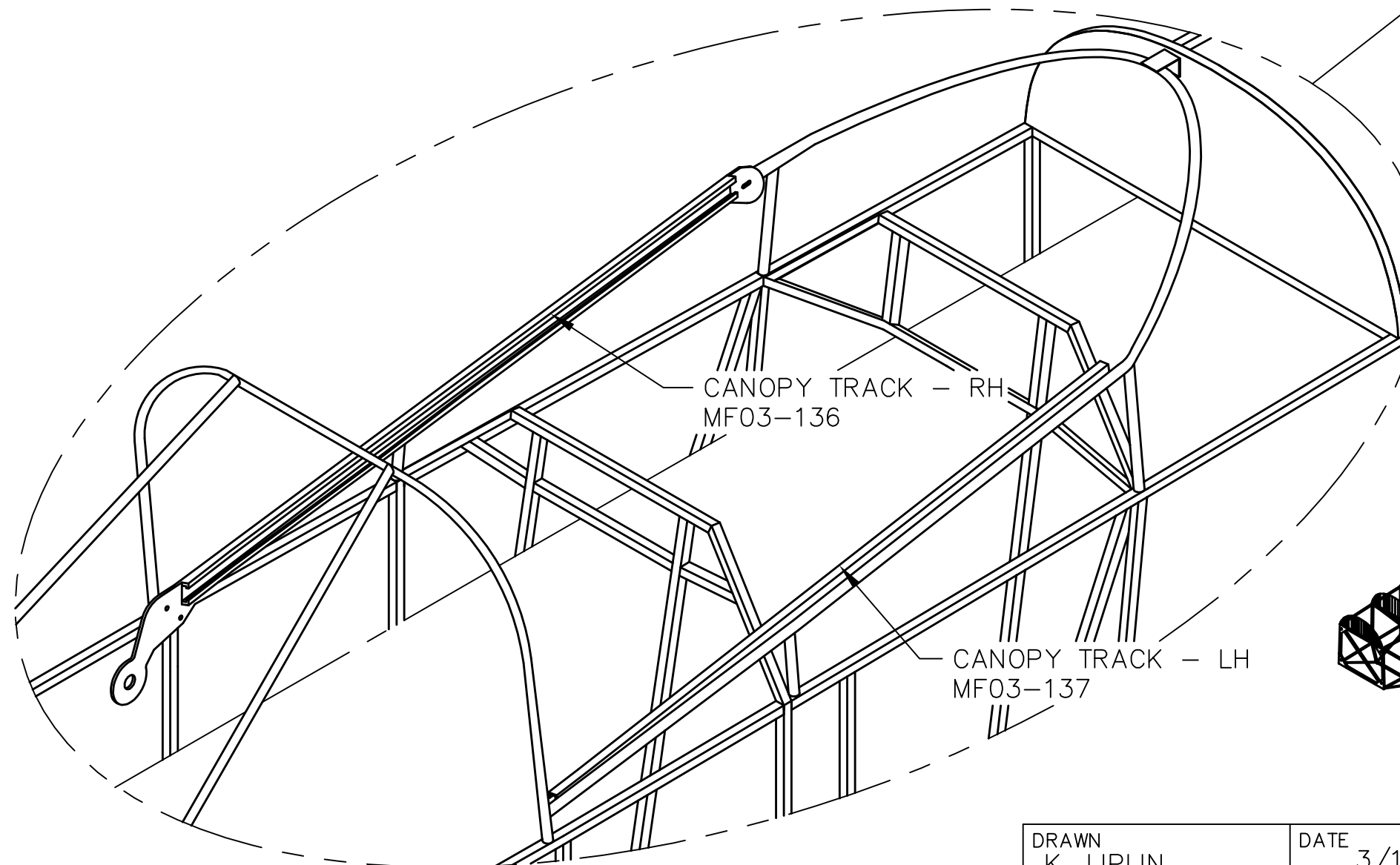


- NOTE:**
- CENTER THE CANOPY TRACKS ON THE STEEL CANOPY HOOP AND CLAMP IN PLACE.
 - MATCH DRILL THE HOLES FROM THE CANOPY TRACKS TO THE CANOPY HOOP. (THIS IS THE ONLY STEEL TUBE ON THE FUSELAGE THAT WILL BE DRILLED DURING THE CONSTRUCTION PROCESS.)
 - FOR THE BEST FIT IT IS RECOMMENDED TO DRILL THE FIRST AND LAST HOLES ON THE CANOPY TRACKS AND CLECO IN PLACE WHILE DRILLING INNER HOLES.
 - AFTER DRILLING IS COMPLETE REMOVE THE TRACKS AND DEBURR HOLES. (DO NOT PERMANENTLY INSTALL TRACKS AT THIS TIME, THE INNER SKINS MUST BE INSTALLED FIRST.)
 - REFER TO DRAWINGS T51-04-INS-1037, T51-07-INS-1633, T51-07-INS-1634, & T51-07-INS-1681 FOR ADDITIONAL INFORMATION ON TRACK INSTALLATION.

REVISIONS				
E.C. NO.	REV.	DESCRIPTION	BY	DATE
	A	DRAWING RELEASED	KL	3/03
0095	B	CORRECTED DRAWING	CE	5/04
0499	C	RE-DESIGNED DRAWING	SH	8/07
0819	D	NOTES ADDED	SH	12/08



THIS DOCUMENT PROPRIETARY TO TITAN AIRCRAFT, AND IS NOT TO BE USED, CIRCULATED, REPRODUCED, COPIED, OR DISCLOSED IN ANY MANNER WITHOUT PRIOR WRITTEN PERMISSION OF AN AUTHORIZED OFFICIAL OF TITAN AIRCRAFT.

TITAN AIRCRAFT SUPPLY
 1419 STATE ROUTE 45 SOUTH
 AUSTINBURG, OHIO 44010

DETAIL NAME		CANOPY TRACK INSTALLATION	
SCALE	N/A	PART NO.	
ASSEMBLY NAME			
PART NO.		DRAWING NO. F29	
DRAWING NO. <i>B T51-03-INS-0649-E</i>			

DRAWN	K. LIPLIN	DATE	3/13/03
CHECKED	R. INGLE	DATE	7/1/09
APPROVED	K. BROOKS	DATE	8/7/09