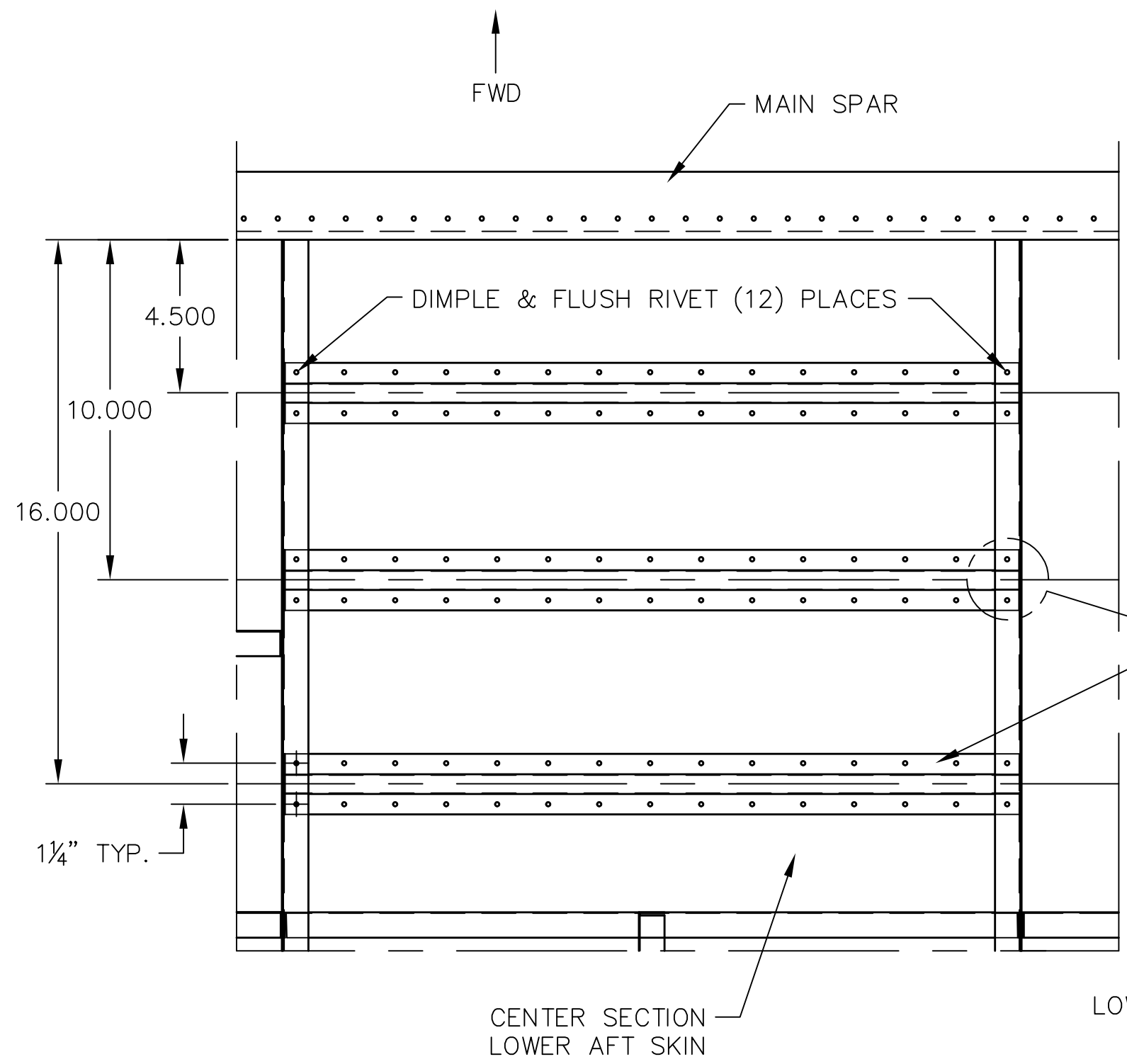
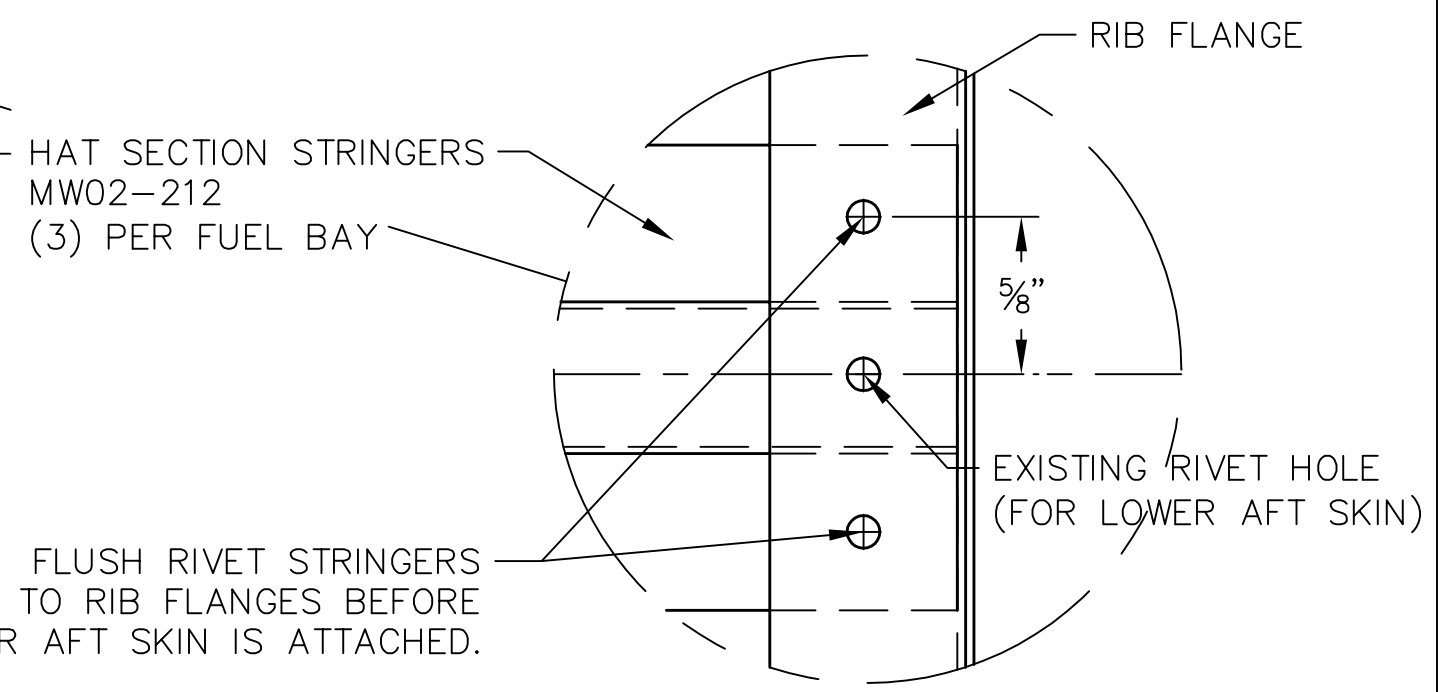


REVISIONS				
E.C. NO.	REV.	DESCRIPTION	BY	DATE
	A	DRAWING RELEASED	KL	1/03
0318	B	NOTES ADDED	SH	8/06
0926	C	PART NUMBER CORRECTED	SH	4/09



- NOTES:
- CLECO LOWER AFT SKIN IN PLACE.
 - PLACE HAT SECTION STRINGERS INSIDE THE FUEL TANK BAY ON RIB FLANGES AND SPACE STRINGERS AS SHOWN.
 - DRILL TWO HOLES AT EACH END OF HAT SECTIONS INTO THE RIB FLANGES & CLECO IN PLACE AS SHOWN.
 - LAYOUT RIVET PATTERNS ALONG THE HAT SECTION STRINGERS APPROX. 1 1/2" CENTER TO CENTER.
 - DRILL THRU HAT SECTION STRINGERS AND SKIN.
 - REMOVE THE LOWER AFT SKIN AND HAT SECTIONS. DEBURR & DIMPLE DRILL HOLES FOR FLUSH RIVETING.



TOP L.H. SIDE

TITAN AIRCRAFT SUPPLY
 1419 STATE ROUTE 45 SOUTH
 AUSTINBURG, OHIO 44010

DETAIL NAME		TOP VIEW OF FUEL TANK BAY	
SCALE	1/4"=1"	PART NO.	
ASSEMBLY NAME			
PART NO.		DRAWING NO. CS3	
DRAWING NO.		B T51-03-INS-0609-C	

DRAWN	K. LIPLIN	DATE	2/11/03
CHECKED	R. INGLE	DATE	8/17/09
APPROVED	K. BROOKS	DATE	8/18/09

THIS DOCUMENT PROPRIETARY TO TITAN AIRCRAFT, AND IS NOT TO BE USED, CIRCULATED, REPRODUCED, COPIED, OR DISCLOSED IN ANY MANNER WITHOUT PRIOR WRITTEN PERMISSION OF AN AUTHORIZED OFFICIAL OF TITAN AIRCRAFT.