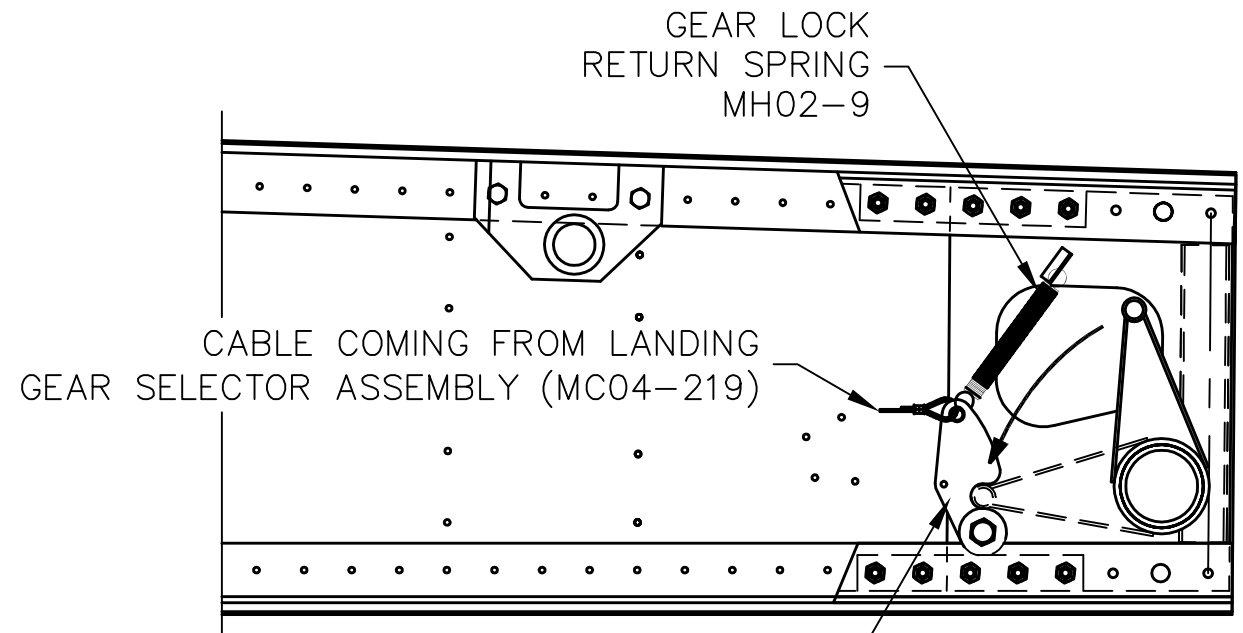
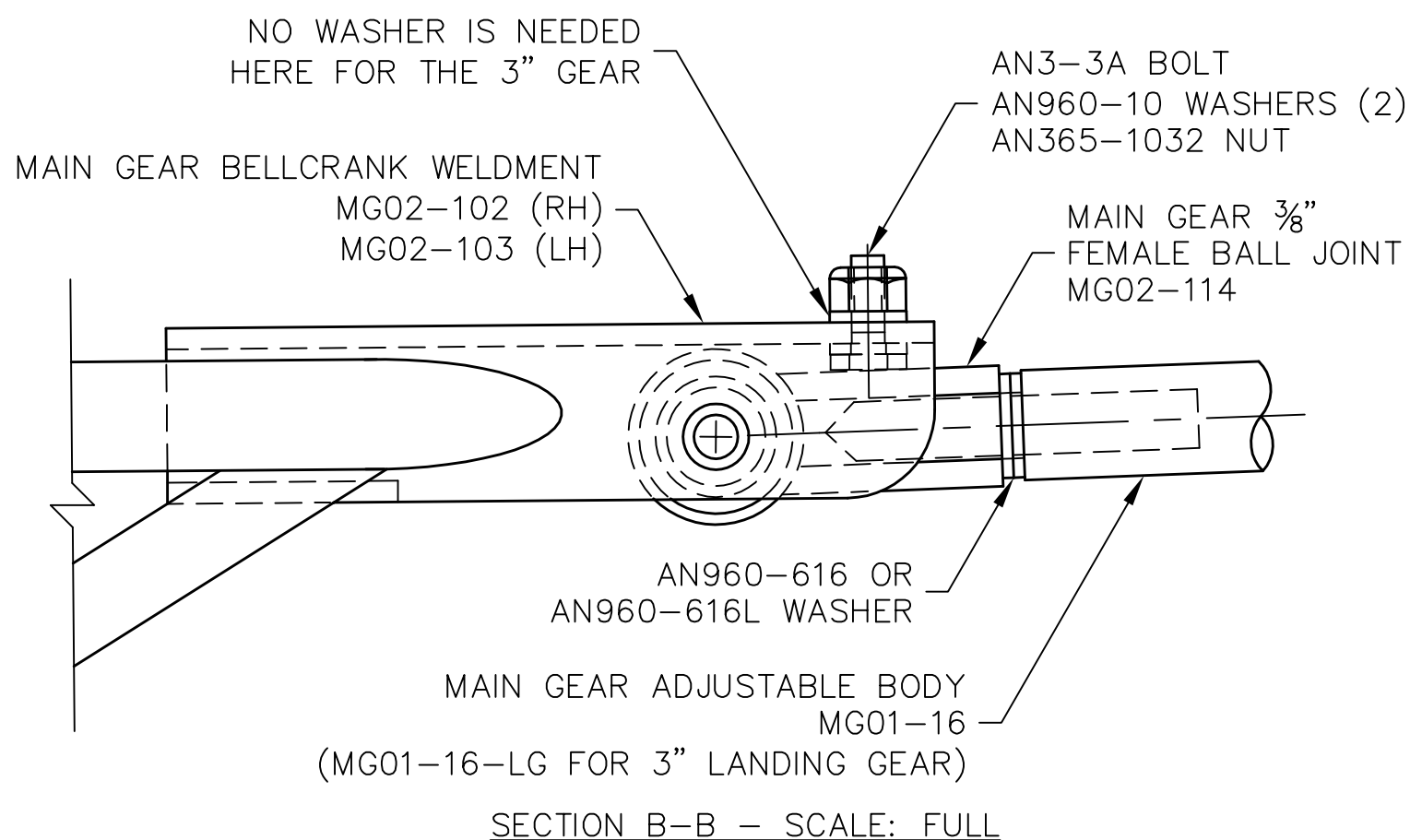
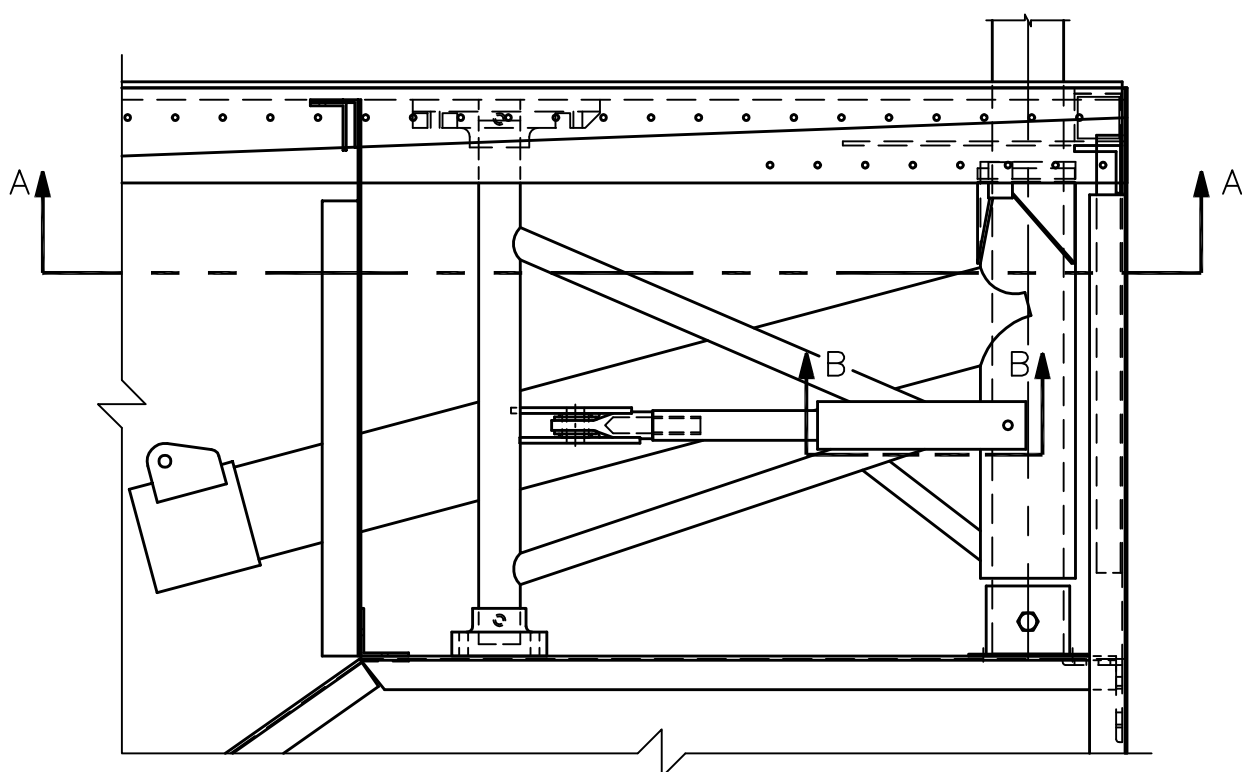


THIS DOCUMENT PROPRIETARY TO TITAN AIRCRAFT, AND IS NOT TO BE USED, CIRCULATED, REPRODUCED, COPIED, OR DISCLOSED IN ANY MANNER WITHOUT PRIOR WRITTEN PERMISSION OF AN AUTHORIZED OFFICIAL OF TITAN AIRCRAFT.

REVISIONS				
E.C. NO.	REV.	DESCRIPTION	BY	DATE
0320	B	NOTES ADDED	SH	8/06
0964	C	LARGE GEAR NOTES ADDED	SH	6/09
1182	D	ADDED NOTES	BH	9/15



NOTES:

- THE MAIN GEAR BELLCRANK (MG02-102 & 103) AND THE MAIN GEAR ADJUSTABLE BODY (MG01-16) ARE THE PRIMARY LOCK FOR EACH MAIN GEAR LEG, BY ALLOWING THE ADJUSTABLE BODY TO GO SLIGHTLY OVERCENTER.
- TO TEST THIS, DISENGAGE THE MAIN GEAR SECONDARY LOCK (MG01-5) AND PUSH IN ON THE GEAR LEG. THE BELLCRANK AND ADJUSTABLE BODY SHOULD NOT COLLAPSE INWARD. IF THEY DO, YOU WILL HAVE TO ADJUST THE ADJUSTABLE BODY'S BALL JOINT BY ADDING OR SUBTRACTING WASHERS TO GET THE ASSEMBLY OVERCENTER.

TITAN AIRCRAFT SUPPLY
 1419 STATE ROUTE 45 SOUTH
 AUSTINBURG, OHIO 44010

DRAWN K. LIPLIN CHECKED K. BROOKS APPROVED B. KOLENO	DATE 1/28/04 DATE 9/28/15 DATE 9/28/15	SCALE 1/4"=1" PART NO. ASSEMBLY NAME PART NO. DRAWING NO. LG4 DRAWING NO. B T51-03-INS-0599-D
---------------------------------------------------------------------	-------------------------------------------------------	------------------------------------------------------------------------------------------------------------------

SECTION A-A