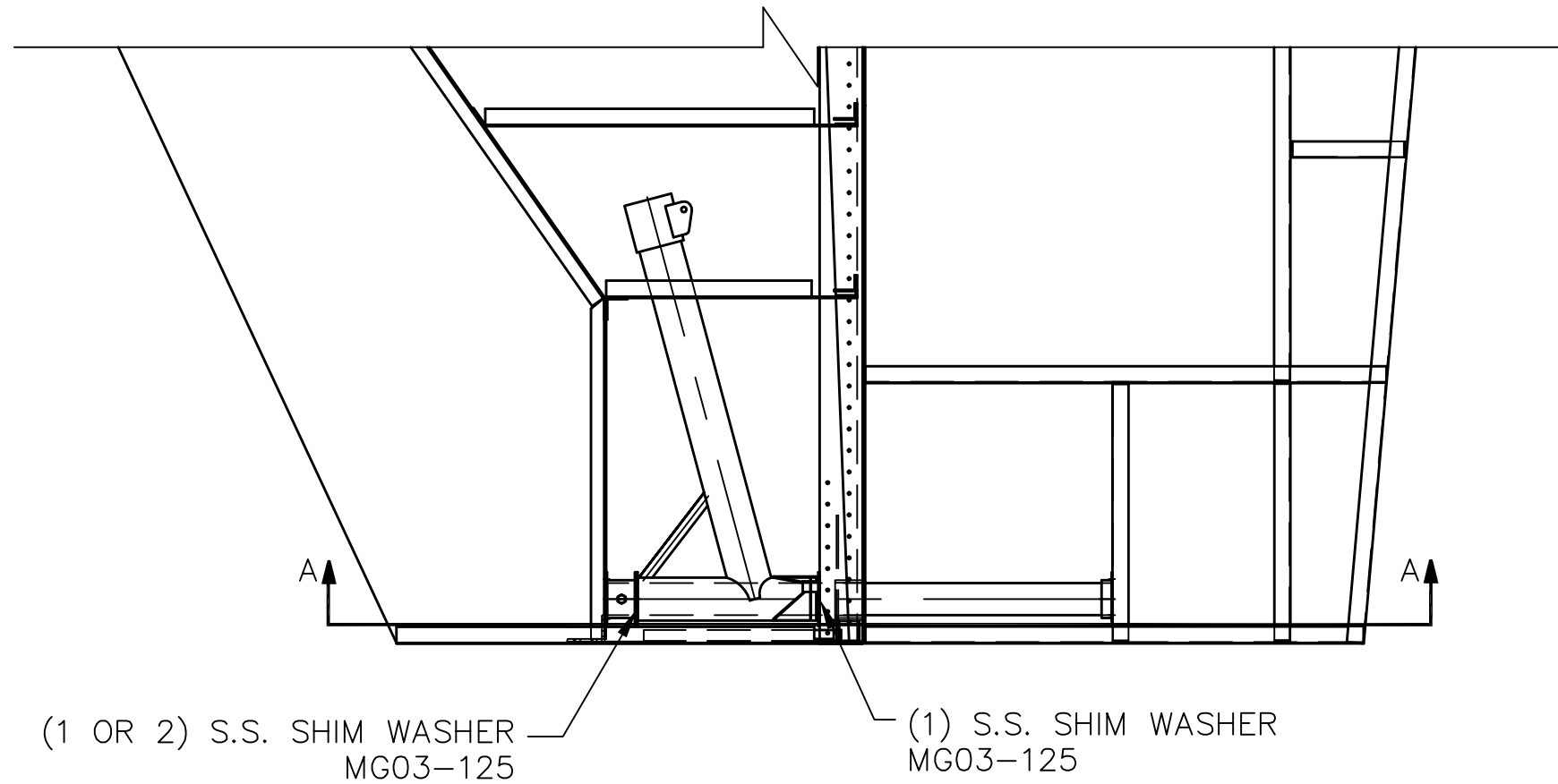
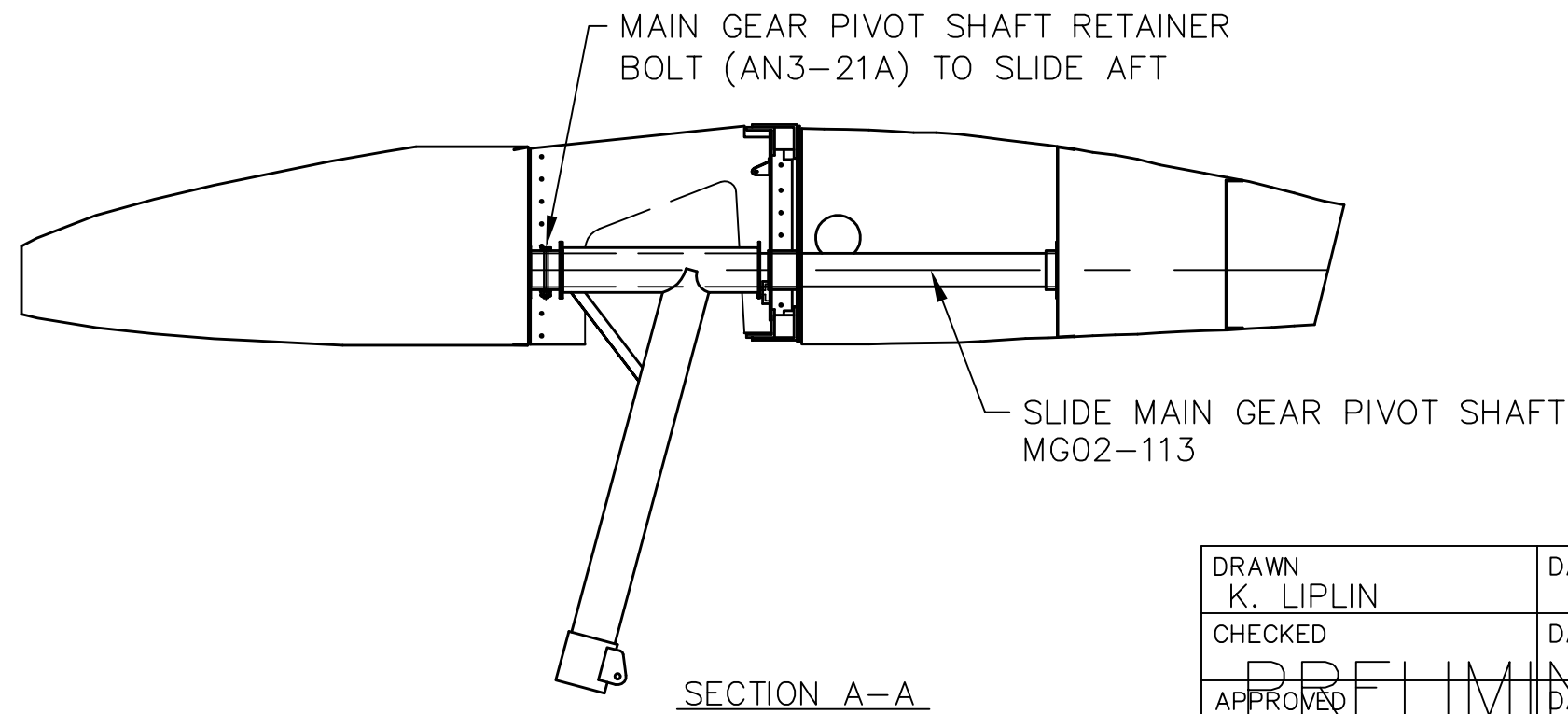



REVISIONS				
E.C. NO.	REV.	DESCRIPTION	BY	DATE
	A	DRAWING RELEASED	KL	1/03
0319	B	NOTES ADDED	SH	8/06



NOTES:

- REMOVE MAIN GEAR PIVOT TUBE RETAINER BOLT (AN3-21A BOLT, AN960-10 WASHER, & AN365-1032 LOCKNUT.)
- SLIDE THE MAIN GEAR PIVOT TUBE BACK.
- SHIM WASHERS WILL FALL OUT AND THE GEAR LEG WILL DROP DOWN. (NOTE WHERE THE SHIM WASHERS ARE LOCATED BEFORE DISASSEMBLING.)
- DURING REASSEMBLY (1) SHIM WASHER SHOULD BE LOCATED BEHIND THE GEAR LEG AND AT LEAST (1) SHIM WASHER SHOULD BE LOCATED AHEAD OF THE GEAR LEG. ADD OR REMOVE WASHERS TO SET THE END PLAY SO IT ISN'T EXCESSIVE OR TOO TIGHT.
- THE GEAR LEG SHOULD SWING FREELY WHEN REASSEMBLED.




TITAN AIRCRAFT SUPPLY
 1419 STATE ROUTE 45 SOUTH
 AUSTINBURG, OHIO 44010

DETAIL NAME MAIN GEAR LEG INSTALLATION & REMOVAL	
SCALE 1/8"=1"	PART NO.
ASSEMBLY NAME	
PART NO.	DRAWING NO.
DRAWING NO. B T51-03-INS-0588-B	

DRAWN K. LIPLIN	DATE 1/21/03
CHECKED	DATE
APPROVED	DATE

PRELIMINARY

THIS DOCUMENT PROPRIETARY TO TITAN AIRCRAFT, AND IS NOT TO BE USED, CIRCULATED, REPRODUCED, COPIED, OR DISCLOSED IN ANY MANNER WITHOUT PRIOR WRITTEN PERMISSION OF AN AUTHORIZED OFFICIAL OF TITAN AIRCRAFT.