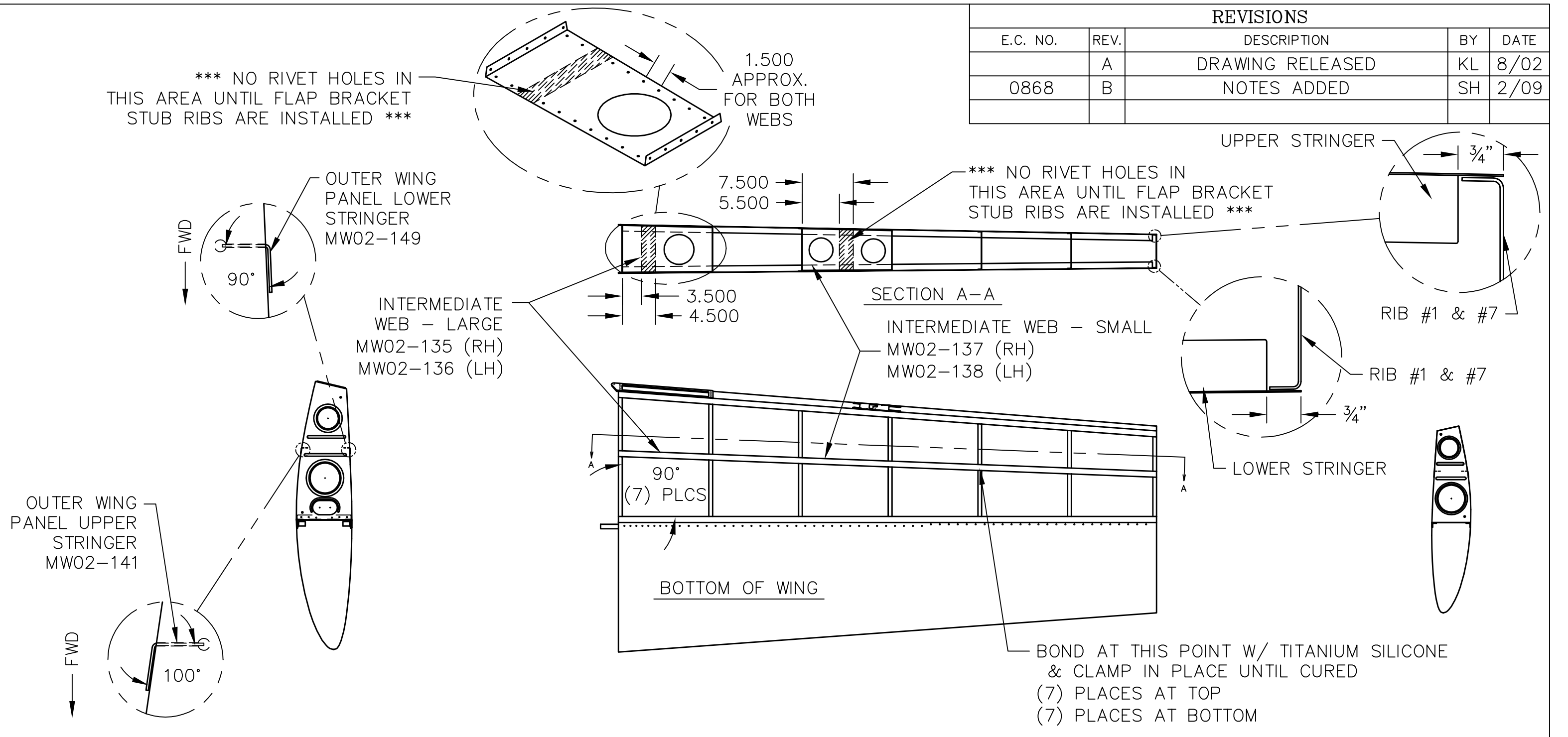


| REVISIONS | | | | |
|-----------|------|------------------|----|------|
| E.C. NO. | REV. | DESCRIPTION | BY | DATE |
| | A | DRAWING RELEASED | KL | 8/02 |
| 0868 | B | NOTES ADDED | SH | 2/09 |



- NOTES:**
- RIB'S #2 THRU #6 HAVE SLOTS PRE-CUT FOR STRINGER'S TO FIT IN. (ALL STRINGER FLANGES SHOULD FACE TOWARDS THE LEADING EDGE.)
 - NOTCH ENDS OF STRINGER'S 3/4" TO FIT OVER RIB'S #1 AND #7.
 - FIT INTERMEDIATE WEBS, BOND, AND RIVET IN PLACE WITH SD42BS RIVETS.
 - UPPER STRINGER'S ARE BENT AT 100° AND LOWER STRINGER'S ARE BENT AT 90°.

TITAN AIRCRAFT SUPPLY
 1419 STATE ROUTE 45 SOUTH
 AUSTINBURG, OHIO 44010

| | | | | |
|-----------------------|--|-----------------|---|----------------|
| DRAWN K. LIPLIN | | DATE 8/20/02 | DETAIL NAME STRINGER & INTERMEDIATE WEBS INSTRUCTIONS | |
| CHECKED R. INGLE | | DATE 2/9/09 | SCALE 1/16"=1" | PART NO. |
| APPROVED K. BROOKS | | DATE 8/18/09 | ASSEMBLY NAME | |
| | | | PART NO. | DRAWING NO. W3 |
| | | | DRAWING NO. B T51-02-INS-0388-B | |

THIS DOCUMENT PROPRIETARY TO TITAN AIRCRAFT, AND IS NOT TO BE USED, CIRCULATED, REPRODUCED, COPIED, OR DISCLOSED IN ANY MANNER WITHOUT PRIOR WRITTEN PERMISSION OF AN AUTHORIZED OFFICIAL OF TITAN AIRCRAFT.