



Advisory Notice for Titan Tornado Aircraft

February 26, 2010

Inspection required during every preflight

Aircraft affected:

- Aircraft with any Rotax 912 series engines
- Aircraft that have ever been equipped with any Rotax 912 series engines

Aircraft not affected:

- Aircraft with engines other than the Rotax 912 series

Circumstances:

Cracks have been found in the engine mount area of several airframes that were equipped with a Rotax 912S series engine without the slipper clutch or high torque starter.

Type of inspection required:

From inside the aircraft, closely inspect all the welds near the welded-in engine mount bolts for cracks. Also inspect the frame tubing near the welds. If a crack or cracks are located, repairs must be accomplished prior to any further flying or running of the engine.

This inspection should be included during every preflight if the aircraft is currently equipped with any Rotax 912 series engines.

Corrective action:

Install engine mount angle braces under the existing engine mounts as shown in the attached instructional drawing. These braces minimize the torsional loads transmitted to the engine mount tubes.

Titan Aircraft also recommends installing the slipper clutch and high torque starter on all Rotax 912 series engines to prevent excessive vibration during start-up and shutdown.

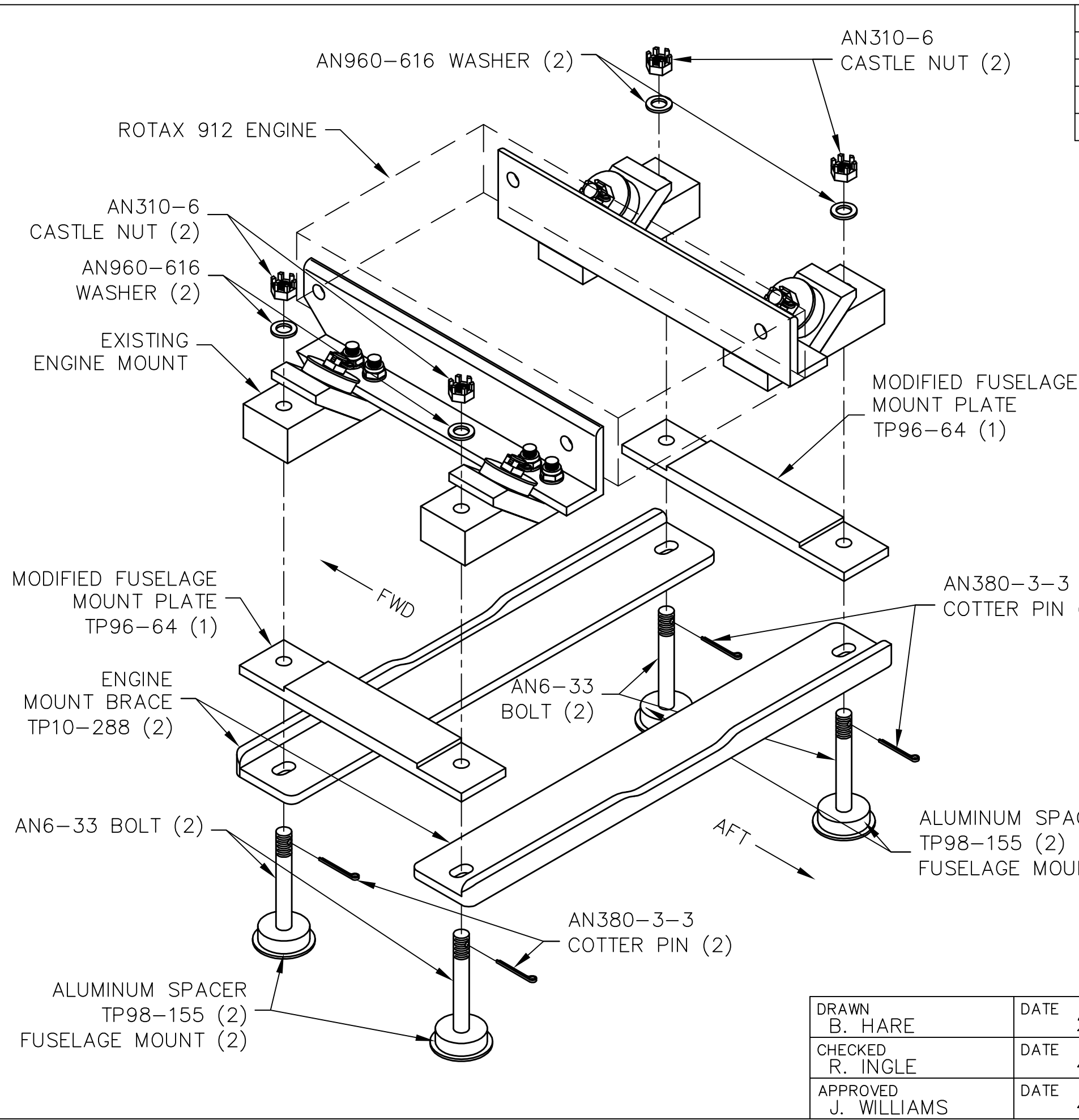
Contact Titan Aircraft: 440-275-3205 or email support@titanaircraft.com with any questions or concerns or to purchase the engine mount braces.

Best regards,

A handwritten signature in blue ink that reads "John Williams".

John Williams
President
Titan Aircraft

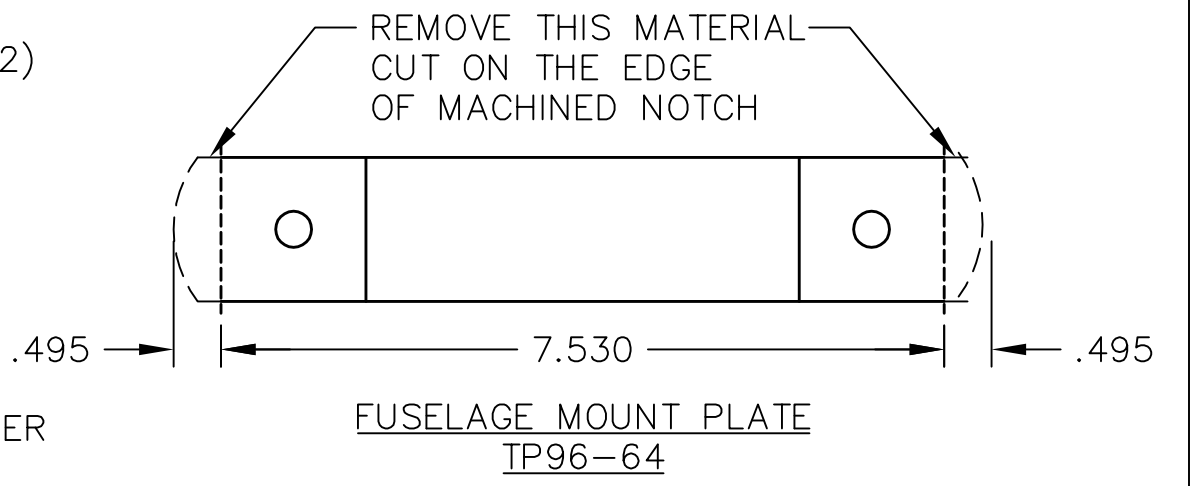
THIS DOCUMENT PROPRIETARY TO TITAN AIRCRAFT, AND IS NOT TO BE USED, CIRCULATED, REPRODUCED, COPIED, OR DISCLOSED IN ANY MANNER WITHOUT PRIOR WRITTEN PERMISSION OF AN AUTHORIZED OFFICIAL OF TITAN AIRCRAFT.



REVISIONS				
E.C. NO.	REV.	DESCRIPTION	BY	DATE
	A	DRAWING RELEASED	BH	2/10

NOTES:

- REMOVE AN380-3-3 COTTER PINS FROM AN6-31 BOLTS THAT RUN THROUGH THE FUSELAGE MOUNT. REMOVE THE AN310-6 CASTLE NUTS AND AN960-616 WASHER FROM EACH BOLT.
- DEPENDING ON HOW YOUR ENGINE WIRES, LINES, ETC ARE ROUTED, YOU SHOULD NOW BE ABLE TO LIFT THE ENGINE FAR ENOUGH OFF THE AIRFRAME TO REMOVE THE FUSELAGE MOUNT PLATES AND MODIFIED EACH TO THE DRAWING GIVEN BELOW.
- REMOVE THE AN6-31 BOLTS FROM THE AIRFRAME AND REPLACE WITH THE SUPPLIED AN6-33 BOLTS.
- ASSEMBLE THE ENGINE MOUNT BRACES ON THE AIRCRAFT AS SHOWN.
- ASSEMBLE THE MODIFIED FUSELAGE MOUNT PLATES ON TOP OF THE BRACES AS SHOWN.
- LOWER ENGINE BACK DOWN ON THE AIRFRAME AND BOLT EVERYTHING IN TO PLACE. MAKE SURE TO USE NEW COTTER PINS ON EACH BOLT. REATTACH ANY WIRES, LINES, ETC, THAT WERE DISCONNECTED.



TITAN AIRCRAFT SUPPLY
 1419 STATE ROUTE 45 SOUTH
 AUSTINBURG, OHIO 44010

DRAWN B. HARE		DATE 2/8/10	DETAIL NAME ROTAX 912 ENGINE MOUNT BRACE INSTALLATION	
CHECKED R. INGLE		DATE 4/5/10	SCALE N/A	PART NO.
APPROVED J. WILLIAMS		DATE 4/5/10	ASSEMBLY NAME	
			PART NO.	DRAWING NO.
			DRAWING NO. B 10-INS-1469-A	