



## **Advisory Notice for Titan T-51 Mustang Aircraft**

August 17, 2010

### **Service required before any further flights**

#### **Affected aircraft:**

- Aircraft equipped with any Rotax 912/914 series engines

#### **Aircraft not affected:**

- Aircraft equipped with engines other than the Rotax 912/914 series

#### **Circumstances:**

In a recent test of a Rotax 912 equipped T-51 Mustang, it was found that the upper aft engine mount bushings had deformed and started to pull through the bushing mount cups on the firewall engine mount. Upon teardown and inspection, it was determined that this was due to the amount of seat area available in the bushing mount cups. Along with this incident, there have been two other reports of 912 equipped T-51s with the same problem.

#### **Inspection required:**

There is no inspection required. This is a mandatory service for all affected aircraft.

#### **Corrective action:**

Follow the attached instructional to install the (4) Engine Mount Thrust Plates (MP10-151). These plates increase the seat area and will not allow the bushing to deform/pull through.

Contact Titan Aircraft: 440-275-3205 or email [support@titanaircraft.com](mailto:support@titanaircraft.com) with any questions or concerns and to order the thrust plates.

Best regards,

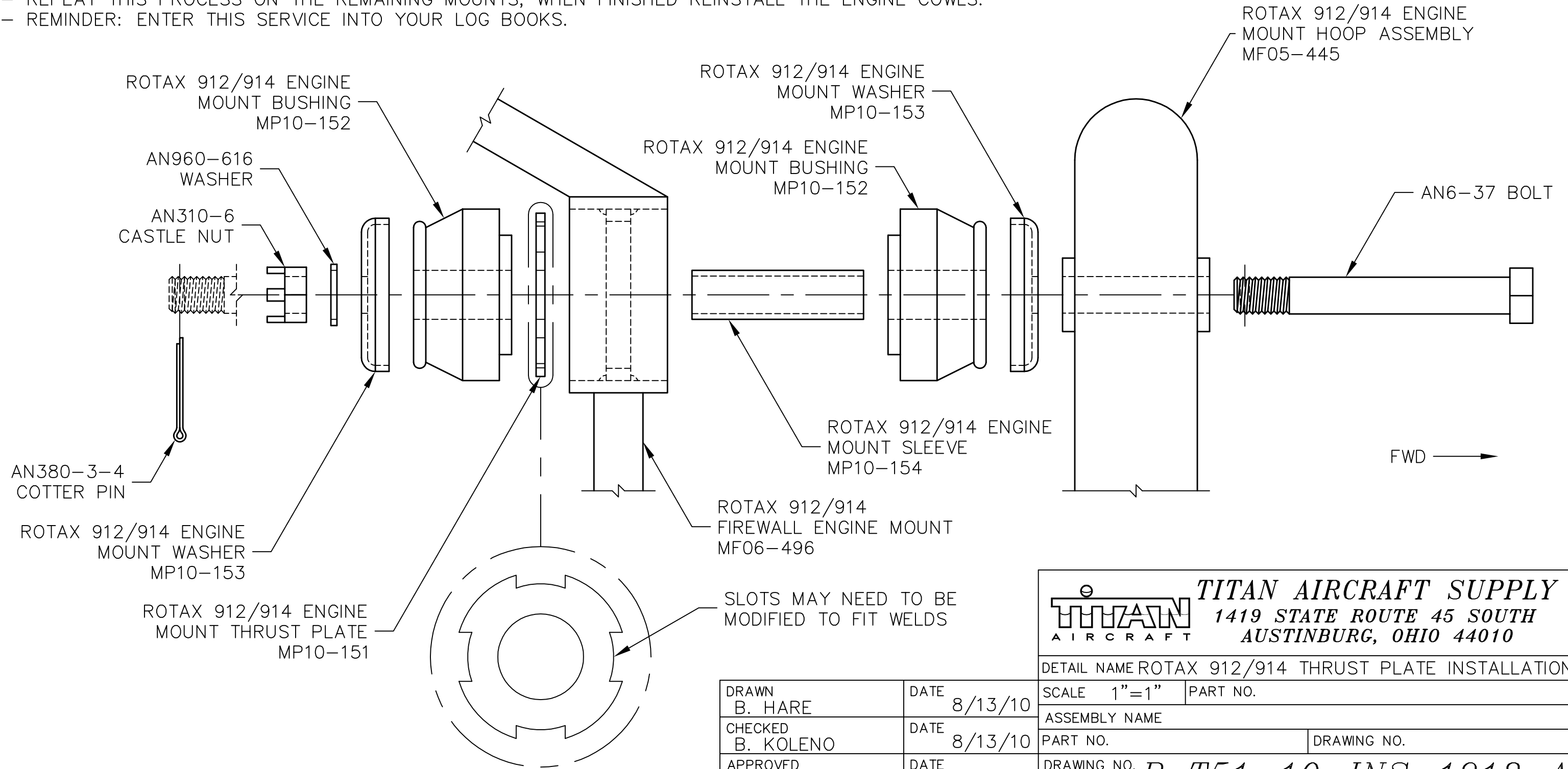
A handwritten signature in blue ink that reads "John Williams".

John Williams  
President  
Titan Aircraft

**NOTES:**

- REMOVE ENGINE COWLS FROM AIRCRAFT.
- WORK ON THE MOUNTS ONE AT A TIME.
- FIRST REMOVE AN380-3-4 COTTER PIN AND THEN THE AN310-6 CASTLE NUT, AN960-616 WASHER, ENGINE MOUNT WASHER (MP10-153), AND ENGINE MOUNT BUSHING (MP10-152).
- TEST FIT THE ENGINE MOUNT THRUST PLATE (MP10-151). YOU MAY HAVE TO MODIFY THE SLOTTED AREA TO MATCH THE WELDS IN THE FIREWALL ENGINE MOUNT CUPS.
- ONCE THE THRUST PLATE SITS FLAT IN THE CUP, REINSTALL THE ENGINE MOUNT BUSHING, ENGINE MOUNT WASHER, AN960-616 WASHER, AN310-6 CASTLE NUT, AND A NEW AN380-3-4 COTTER PIN.
- REPEAT THIS PROCESS ON THE REMAINING MOUNTS, WHEN FINISHED REINSTALL THE ENGINE COWLS.
- REMINDER: ENTER THIS SERVICE INTO YOUR LOG BOOKS.

REVISIONS				
E.C. NO.	REV.	DESCRIPTION	BY	DATE
	A	DRAWING RELEASED	BH	8/10



**TITAN AIRCRAFT SUPPLY**  
**TITAN AIRCRAFT** 1419 STATE ROUTE 45 SOUTH  
 AUSTINBURG, OHIO 44010

DETAIL NAME ROTAX 912/914 THRUST PLATE INSTALLATION

DRAWN B. HARE	DATE 8/13/10
CHECKED B. KOLENO	DATE 8/13/10
APPROVED J. WILLIAMS	DATE 8/13/10

SCALE 1"=1"	PART NO.
ASSEMBLY NAME	
PART NO.	DRAWING NO.
DRAWING NO. <b>B T51-10-INS-1918-A</b>	

THIS DOCUMENT PROPRIETARY TO TITAN AIRCRAFT, AND IS NOT TO BE USED, CIRCULATED, REPRODUCED, COPIED, OR DISCLOSED IN ANY MANNER WITHOUT PRIOR WRITTEN PERMISSION OF AN AUTHORIZED OFFICIAL OF TITAN AIRCRAFT.