



Advisory Notice for Titan T-51 Mustang Aircraft

March 4, 2009

Service recommended before any further flights

Affected aircraft:

- Aircraft with serial numbers 66 and prior

Aircraft not affected:

- Aircraft with serial number 67 and up

Circumstances:

An aircraft, with approximately 150 hours of service on a rough grass field, was found to have the support tube at station #11 twisted. This caused the tailwheel to retract while the aircraft was landing, resulting in damage to the gear doors.

Inspection required:

Using the aft baggage compartment opening, inspect station #11 to see if there is a second tube welded in place above the over center support bracket tube, as shown on the attached drawing number T51-03-INS-0816-E. If there a second tube no further action is required, if not, see below.

Corrective action:

A field modification kit (MC06-293) is available to strengthen station #11. It simply bolts into place to provide the additional support required, as shown on the attached drawing number T51-09-INS-1807-A.

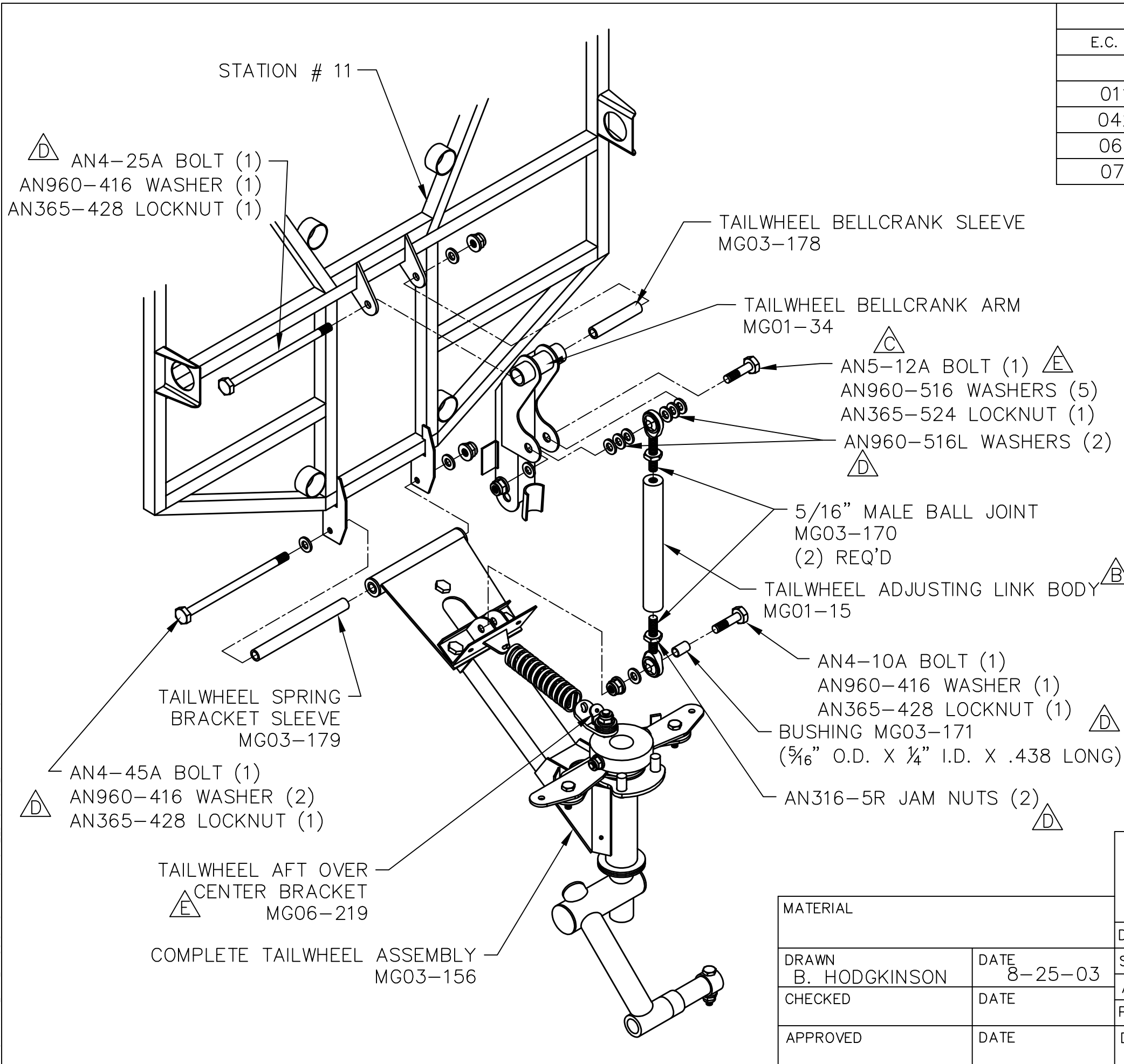
Contact Titan Aircraft: 440-275-3205 or email support@titanaircraft.com with any questions or concerns.

Best regards,

A handwritten signature in blue ink that reads "John Williams".

John Williams
President
Titan Aircraft

THIS DOCUMENT PROPRIETARY TO TITAN AIRCRAFT, AND IS NOT TO BE USED, CIRCULATED, REPRODUCED, COPIED, OR DISCLOSED IN ANY MANNER WITHOUT PRIOR WRITTEN PERMISSION OF AN AUTHORIZED OFFICIAL OF TITAN AIRCRAFT.



REVISIONS				
E.C. NO.	REV.	DESCRIPTION	BY	DATE
	A	DRAWING RELEASED	BH	7/03
0117	B	ADDED PART NUMBERS	CE	8/04
0427	C	BOLT CHANGED	SH	2/07
0613	D	HARDWARE UPDATED	SH	2/08
0741	E	HARDWARE CORRECTED	SH	7/08

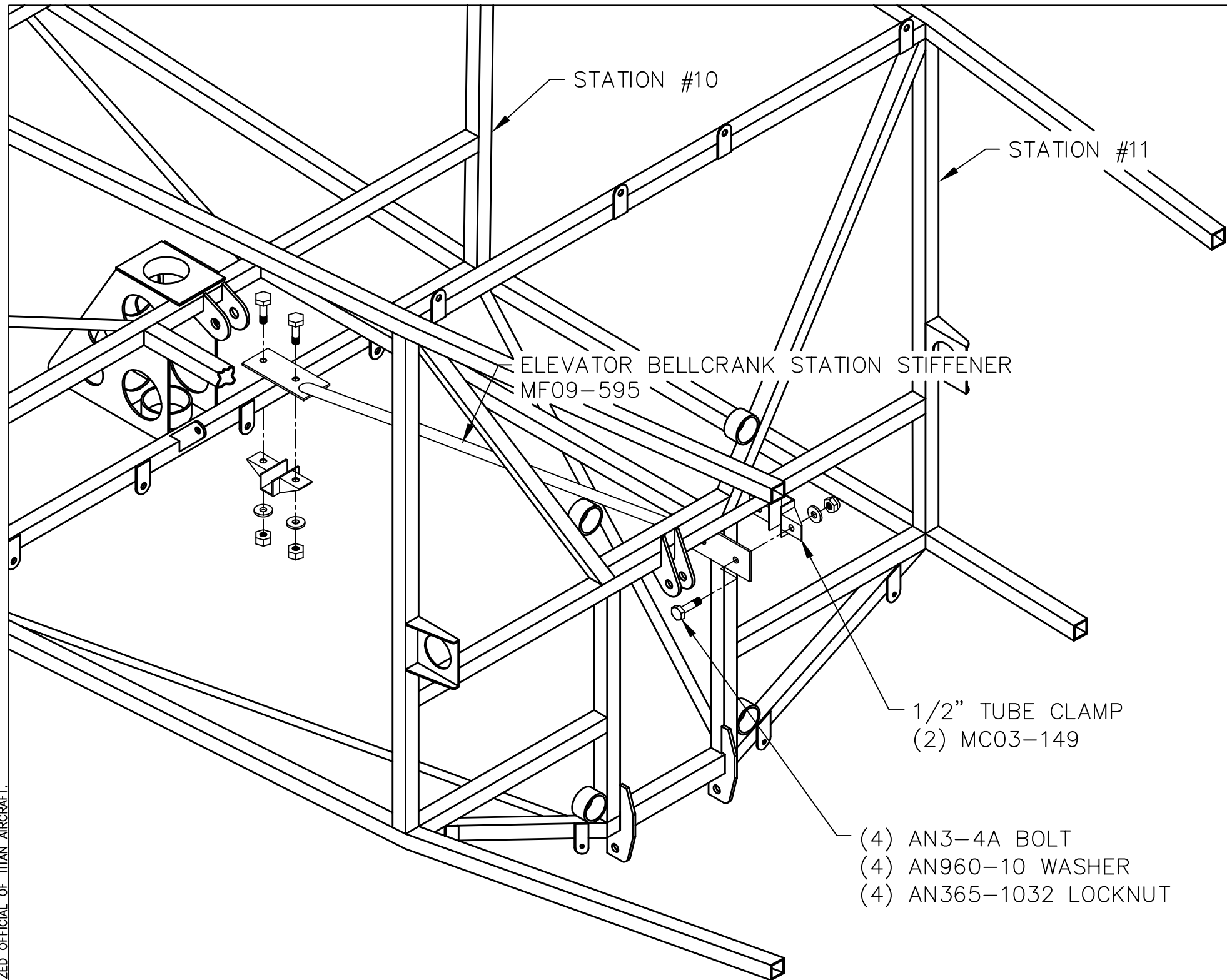
NOTES:

- TIGHTEN THE TAILWHEEL BELLCRANK ARM (MG01-34) AS SHOWN, THE TAILWHEEL BELLCRANK ARM PIVOTS ON THE TAILWHEEL BELLCRANK SLEEVE (MG03-178). MAKE SURE THE BELLCRANK ARM SWINGS FREELY ON (MG03-178) WITH THE NUT AND BOLT TIGHT.
- TIGHTEN THE COMPLETE TAILWHEEL ASSEMBLY (MG03-156) TO THE BOTTOM OF STATION # 11 WITH HARDWARE SHOWN. THE TAILWHEEL ASSEMBLY PIVOTS ON THE TAILWHEEL BRACKET SLEEVE (MG03-179). MAKE SURE THE TAILWHEEL SPRING BRACKET SWINGS FREELY WITH THE NUT AND BOLT TIGHT.
- ADJUST THE BALL JOINTS IN THE TAILWHEEL ADJUSTING LINK BODY (MG01-15), SO THE SYSTEM LOCKS OVER CENTER.
- REFER TO DRAWING T51-06-INS-1522 FOR THE LAYOUT OF PARTS IN THE COMPLETE TAILWHEEL ASSEMBLY (MG03-156).


TITAN AIRCRAFT SUPPLY
 1419 STATE ROUTE 45 SOUTH
 AUSTINBURG, OHIO 44010

MATERIAL		DETAIL NAME AS NOTED	
DRAWN B. HODGKINSON	DATE 8-25-03	SCALE 1/4"=1"	PART NO. AS NOTED
CHECKED	DATE	ASSEMBLY NAME TAILWHEEL INSTALLATION INSTRUCTIONAL	
APPROVED	DATE	PART NO.	DRAWING NO.
		DRAWING NO. B T51-03-INS-0816-E	

THIS DOCUMENT PROPRIETARY TO TITAN AIRCRAFT, AND IS NOT TO BE USED, CIRCULATED, REPRODUCED, COPIED, OR DISCLOSED IN ANY MANNER WITHOUT PRIOR WRITTEN PERMISSION OF AN AUTHORIZED OFFICIAL OF TITAN AIRCRAFT.



REVISIONS				
E.C. NO.	REV.	DESCRIPTION	BY	DATE
	A	DRAWING RELEASED	SH	1/09

NOTES:
 - POSITION (MF09-595) AS SHOWN IN DRAWING, STIFFENER SHOULD BE LOCATED ON THE RIGHT SIDE OF THE ELEVATOR BELLCRANK, SO IT DOES NOT INTERFERE WITH LIMIT SWITCH.
 - TRIMMING ON LOWER FORMER U10 AND TAILWHEEL FWD ENCLOSURE MAY BE NECESSARY.

- 1/2" TUBE CLAMP
(2) MC03-149
- (4) AN3-4A BOLT
- (4) AN960-10 WASHER
- (4) AN365-1032 LOCKNUT


TITAN AIRCRAFT SUPPLY
 1419 STATE ROUTE 45 SOUTH
 AUSTINBURG, OHIO 44010

DETAIL NAME ELEVATOR BELLCRANK STIFFENER INSTALLATION	
SCALE 1/4"=1"	PART NO.
ASSEMBLY NAME	
PART NO.	DRAWING NO. 05
DRAWING NO. B T51-09-INS-1807-A	

DRAWN S. HENDERSON	DATE 1/19/09
CHECKED RI	DATE 6/26/09
APPROVED KORY B.	DATE 7/7/09