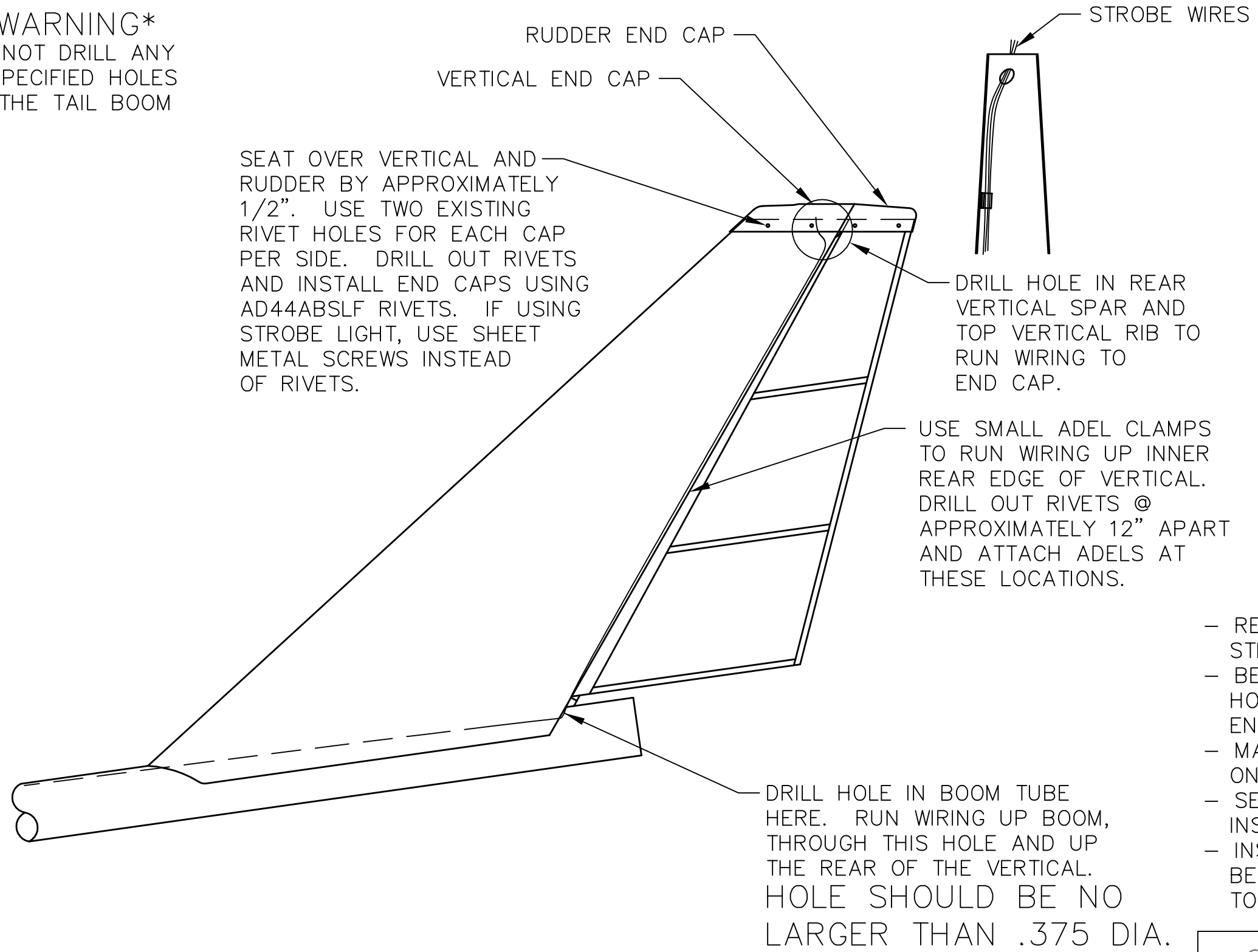
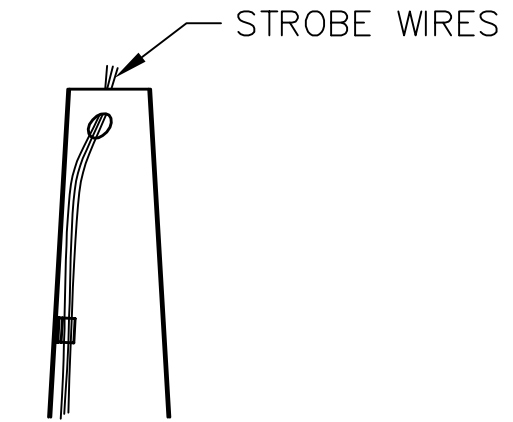


WARNING

DO NOT DRILL ANY UNSPECIFIED HOLES IN THE TAIL BOOM



SEAT OVER VERTICAL AND RUDDER BY APPROXIMATELY 1/2". USE TWO EXISTING RIVET HOLES FOR EACH CAP PER SIDE. DRILL OUT RIVETS AND INSTALL END CAPS USING AD44ABSLF RIVETS. IF USING STROBE LIGHT, USE SHEET METAL SCREWS INSTEAD OF RIVETS.

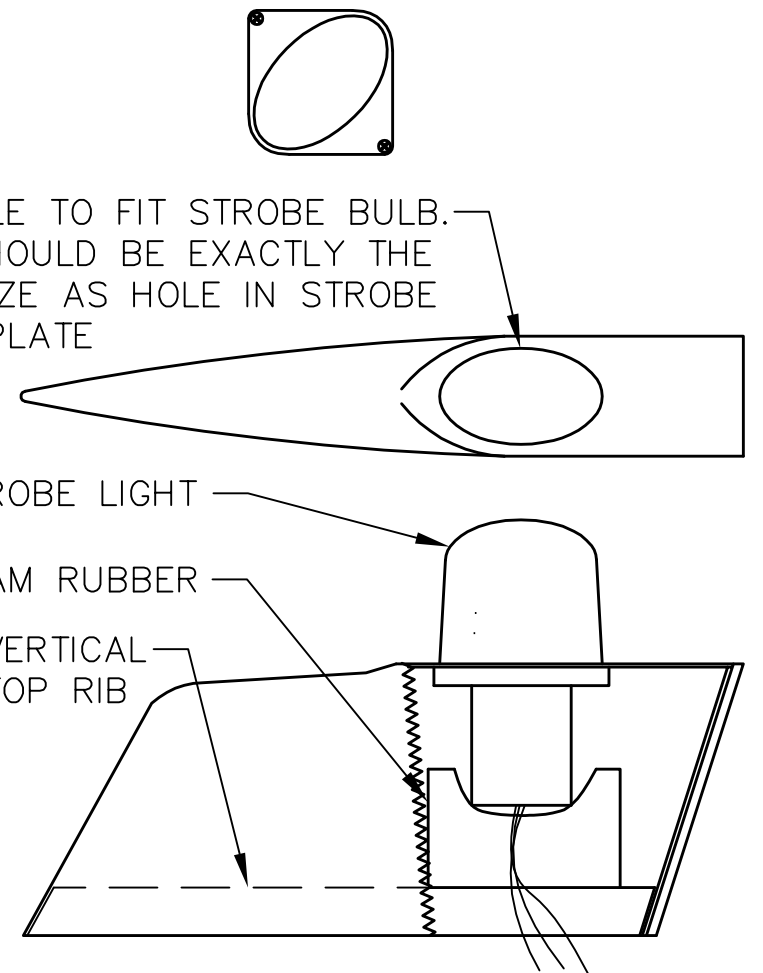


DRILL HOLE IN REAR VERTICAL SPAR AND TOP VERTICAL RIB TO RUN WIRING TO END CAP.

USE SMALL ADEL CLAMPS TO RUN WIRING UP INNER REAR EDGE OF VERTICAL. DRILL OUT RIVETS @ APPROXIMATELY 12" APART AND ATTACH ADELS AT THESE LOCATIONS.

DRILL HOLE IN BOOM TUBE HERE. RUN WIRING UP BOOM, THROUGH THIS HOLE AND UP THE REAR OF THE VERTICAL. HOLE SHOULD BE NO LARGER THAN .375 DIA.

CUT HOLE TO FIT STROBE BULB. HOLE SHOULD BE EXACTLY THE SAME SIZE AS HOLE IN STROBE COVER PLATE



- REMOVE STROBE COVER PLATE FROM STROBE LIGHT ASSEMBLY.
- BEND BACK DRILLED CORNERS OF BULB HOUSING TO FIT INSIDE THE VERTICAL END CAP.
- MAKE SURE THAT LIP OF BULB CATCHES ON THE EDGES OF THE HOLE IN END CAP.
- SEAL IN PLACE WITH SILICON ADHESIVE INSIDE AND OUT.
- INSERT A PEICE OF FOAM RUBBER BETWEEN STROBE AND VERTICAL TOP TO HOLD STROBE SECURELY IN PLACE.

*****NOTE*****

OMIT STROBE AND WIRING INSTRUCTIONS IF NOT USING STROBE LIGHT OPTION

TITAN AIRCRAFT SUPPLY
 1419 STATE ROUTE 45 SOUTH
 AUSTINBURG, OHIO 44010

DRAWN K. BOHRER		DATE 11/4/96	SCALE N/A		PART NO.
CHECKED B. PASSAFIUME		DATE 11/26/96	ASSEMBLY NAME VERTICAL/RUDDER END CAP INSTALLATION		
APPROVED J. WILLIAMS		DATE 11/26/96	PART NO.	DRAWING NO.	
			DRAWING NO. B 96-INS-0769-A		

THIS DOCUMENT PROPRIETARY TO TITAN AIRCRAFT, AND IS NOT TO BE USED, CIRCULATED, REPRODUCED, COPIED, OR DISCLOSED IN ANY MANNER WITHOUT PRIOR WRITTEN PERMISSION OF AN AUTHORIZED OFFICIAL OF TITAN AIRCRAFT.