

NOTES:

- POSITION TP03-275 15 GALLON FUEL TANK ON THE TAIL BOOM. (APPROX. 1 3/4" BACK FROM TAIL BOOM RING, FOR ADEQUATE CLEARANCE FOR AILERON PUSH/PULL TUBE DRIVER.
- PLACE 4" X 8" RUBBER PADS (2) UNDER EACH END OF THE TANK BETWEEN BOOM AND TANK.
- PLACE 4" X 3" RUBBER PAD UNDER EACH END OF THE RESTRAINT TUBE TO PREVENT WEAR AT CORNERS.
- SLIDE THE TWO HALVES TOGETHER AND CLAMP ENDS TO DOWN TUBES. USING EXISTING HOLE AS A GUIDE, DRILL THRU BOTH SIDES OF THE TUBES AND BOLT WITH AN3-10A BOLT, AN960-10 WASHER AND AN365-1032 NYLON LOCK NUT.
- RIVET TP02-244 15 GALLON FUEL TANK BRACKET TO THE BOOM TUBE WITH (3) SD43BS RIVETS.

*NOTICE: IT IS VERY IMPORTANT TO ALLOW ADEQUATE CLEARANCE BETWEEN THE FUEL TANK AND AILERON PUSH/PULL TUBE DRIVER. INSTALL TP02-244 STOP BRACKET TO PREVENT FUEL TANK FROM SLIDING FORWARD AND JAMMING AILERON CONTROLS.

EXTENDED RANGE TANK
INNER RESTRAINT TUBE
△ TP96-98

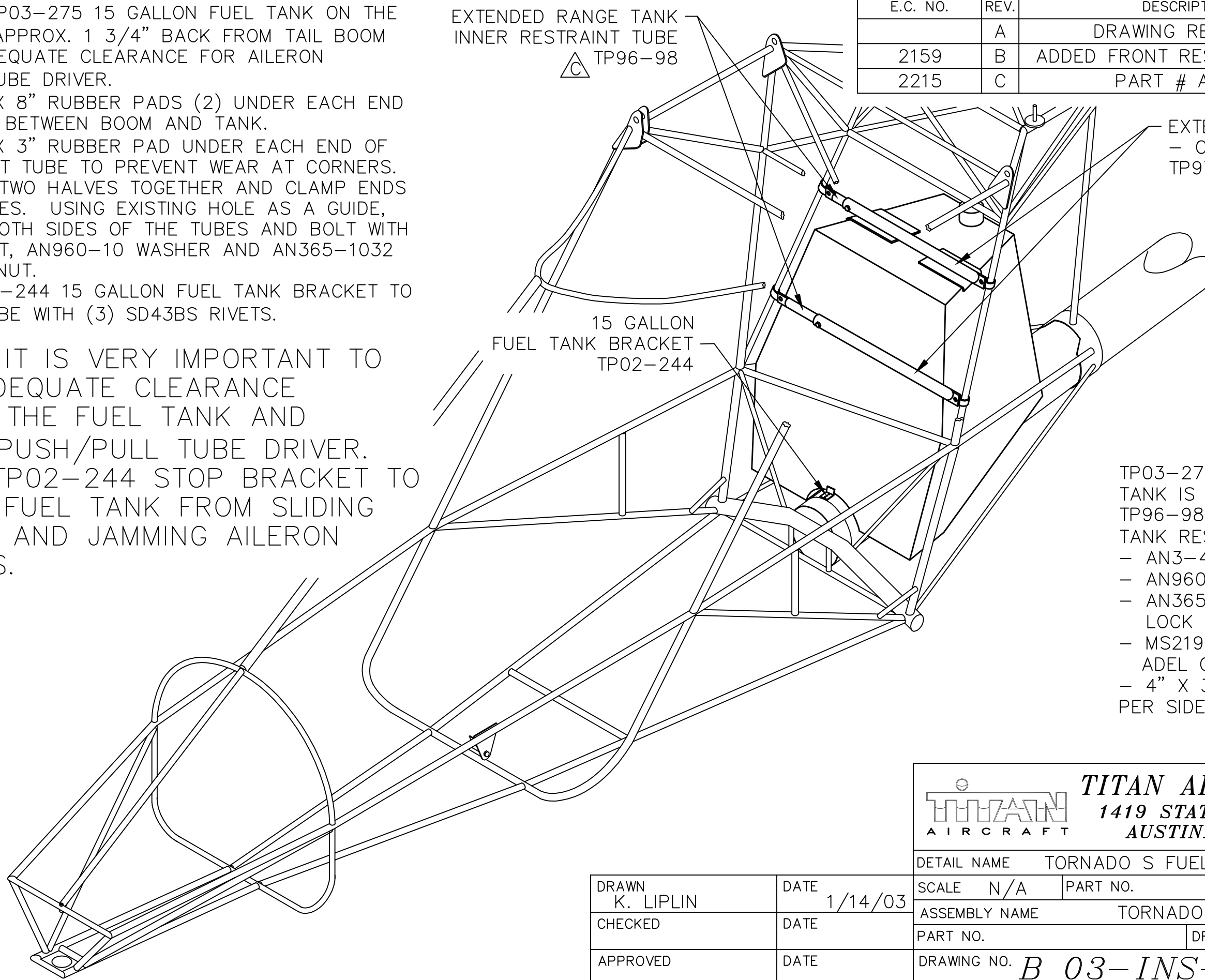
REVISIONS

E.C. NO.	REV.	DESCRIPTION	BY	DATE
	A	DRAWING RELEASED	KL	1/03
2159	B	ADDED FRONT RESTRAINT TUBE	CE	8/05
2215	C	PART # ADDED	SH	1/08

EXTENDED RANGE TANK
- OUTER RESTRAINT TUBE
TP97-132 △

15 GALLON
FUEL TANK BRACKET
TP02-244

- TP03-275 15 GALLON FUEL TANK IS HELD IN PLACE BY TP96-98 EXTENDED RANGE TANK RESTRAINT TUBES AND:
- AN3-4A BOLT
 - AN960-10 WASHER
 - AN365-1032 NYLON LOCK NUT
 - MS21919 WDG10(.625 I.D.) ADEL CLAMP OR EQUIVALENT
 - 4" X 3" RUBBER PAD PER SIDE.



THIS DOCUMENT PROPRIETARY TO TITAN AIRCRAFT, AND IS NOT TO BE USED, CIRCULATED, REPRODUCED, COPIED, OR DISCLOSED IN ANY MANNER WITHOUT PRIOR WRITTEN PERMISSION OF AN AUTHORIZED OFFICIAL OF TITAN AIRCRAFT.

TITAN AIRCRAFT SUPPLY
1419 STATE ROUTE 45 SOUTH
AUSTINBURG, OHIO 44010

DETAIL NAME TORNADO S FUEL TANK INSTALLATION

DRAWN K. LIPLIN	DATE 1/14/03	SCALE N/A	PART NO.
CHECKED	DATE	ASSEMBLY NAME TORNADO S & SS	
APPROVED	DATE	PART NO.	DRAWING NO.
		DRAWING NO. B 03-INS-1391-C	