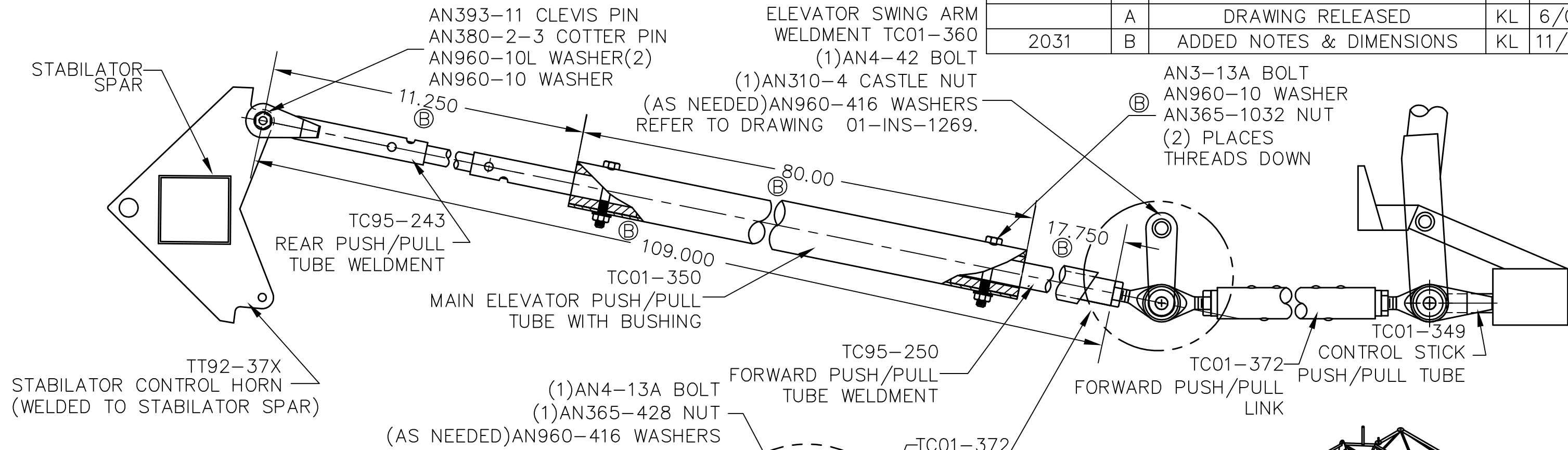
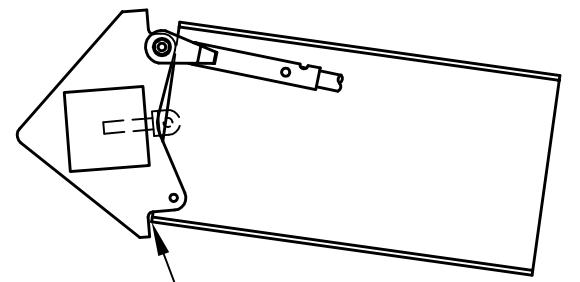
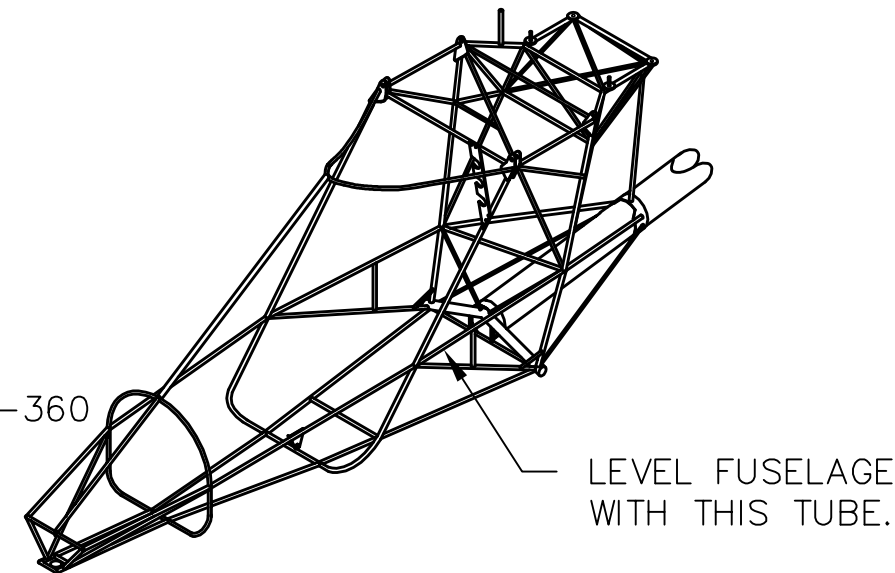
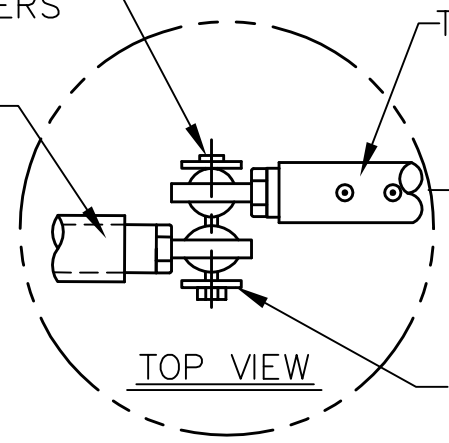


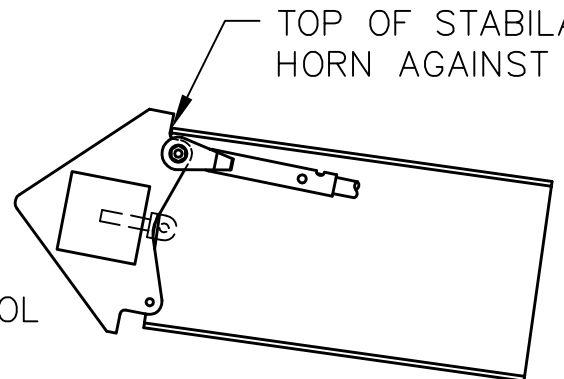
REVISIONS				
E.C. NO.	REV.	DESCRIPTION	BY	DATE
	A	DRAWING RELEASED	KL	6/01
2031	B	ADDED NOTES & DIMENSIONS	KL	11/01



- NOTES:
- TO SET PUSH/PULL SYSTEM IN NEUTRAL POSITION, FIRST LEVEL FUSELAGE WITH INDICATED TUBE. NEXT LEVEL THE STABILATOR. FINALLY, ADJUST BALL JOINTS UNTIL THE CONTROL STICK REACHES THE DESIRED NEUTRAL POSITION.
 - PUSH STICK COMPLETELY FORWARD AND CHECK FOR FULL DEFLECTION.
 - PULL STICK COMPLETELY BACK AND CHECK FOR FULL DEFLECTION.



FULL DEFLECTION WITH STICK PUSHED FORWARD



FULL DEFLECTION WITH STICK PULLED BACK

TITAN AIRCRAFT SUPPLY
 1419 STATE ROUTE 45 SOUTH
 AUSTINBURG, OHIO 44010

DETAIL NAME		SETTING HORIZONTAL PUSH/PULL	
SCALE	N/A	PART NO.	
ASSEMBLY NAME		TORNADO S	
PART NO.		DRAWING NO.	
DRAWING NO.		B 01-INS-1250-B	

DRAWN	K. LIPLIN	DATE	6/12/01
CHECKED		DATE	
APPROVED		DATE	

THIS DOCUMENT PROPRIETARY TO TITAN AIRCRAFT, AND IS NOT TO BE USED, CIRCULATED, REPRODUCED, COPIED, OR DISCLOSED IN ANY MANNER WITHOUT PRIOR WRITTEN PERMISSION OF AN AUTHORIZED OFFICIAL OF TITAN AIRCRAFT.