

NOTES:

– SEE DRAWING T51-10-INS-1890 FOR FIBERGLASS BELLY INSTALLATION OR T51-04-INS-1011 FOR ALUMINUM BELLY STINGER INSTALLATION AND T51-03-INS-0944 FOR ALUMINUM BELLY SKIN LOCATION.

– CAREFULLY CUTOUT THE INLET AREA ON THE FIBERGLASS SCOOP (MF03-133) USING A CUTOFF WHEEL, CLEANUP WITH A BLOCK OR DRUM SANDER.

– ATTACH THE SCOOP TO THE BELLY WITH DUCT TAPE, MAKE SURE THE FRONT OF THE SCOOP IS LEVEL AND APPROXIMATELY 2 3/4" FROM THE CENTER SECTION.

– FIND THE CENTER POINT ON THE BELLY AND SCOOP, STARTING HERE DRILL #30 RIVET HOLES EVERY 1" O.C. THROUGH THE SCOOP, BELLY, AND L8 FLANGE.

– REACHING THROUGH THE OPENING IN THE SCOOP, MARK THE CENTER POINT ON THE FUSELAGE FOR THE FIBERGLASS SCOOP FORMER (MF10-622).

– REMOVE SCOOP.

– DRILL #30 RIVET HOLES EVERY 1" O.C. IN THE TOP BEND OF THE FORMER.

– USE THE SCOOP AS A TEMPLATE TO BEND THE FORMER TO MATCH THE INSIDE UPPER CONTOUR AND THE FILLER (MF10-621) TO MATCH THE OUTSIDE CONTOUR.

– ALIGN THE FORMER ON THE CENTER SECTION WITH THE MARK YOU MADE EARLIER AND BEGIN TO MATCH DRILL THE RIVET HOLES, CLECO AS YOU GO. (NOTE: WATCH DEPTH OF DRILL SO YOU DO NOT HIT THE FUEL TANK.)

– CLECO THE SCOOP TO THE BELLY.

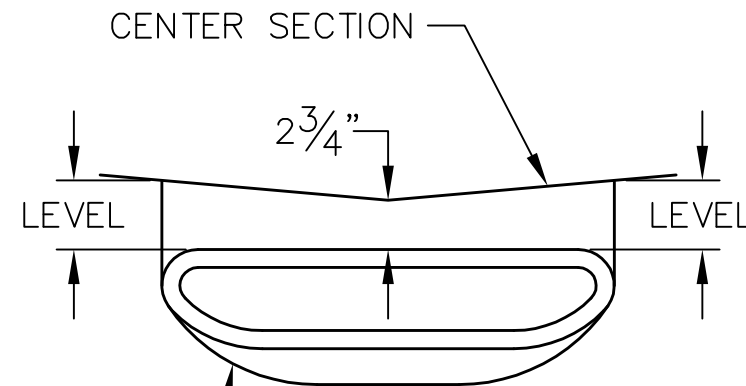
– MAKE SURE THE FRONT OF THE SCOOP IS STILL LEVEL AND APPROXIMATELY 2 3/4" FROM THE CENTER SECTION.

– PLACE THE FILLER BETWEEN THE SCOOP AND THE CENTER SECTION, ATTACH WITH DUCT TAPE.

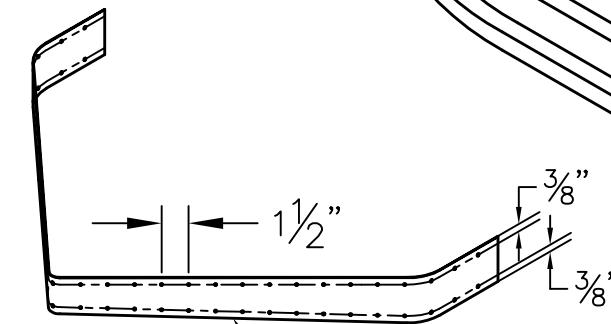
– MEASURE UP 3/8" ON THE SCOOP SIDE AND DOWN 3/8" ON THE CENTER SECTION FOR RIVET LINES.

– STARTING AT THE FILLER CENTER AND WORKING OUTWARDS, DRILL #30 RIVET HOLES THROUGH THE FILLER INTO THE FORMER AND SCOOP EVERY 1 1/2" O.C., CLECO IN PLACE AS YOU GO.

– MAKE ANY FINAL ADJUSTMENTS TO THE SCOOP BEFORE YOU USE AD44ABSLF RIVETS TO SECURE IT IN PLACE.

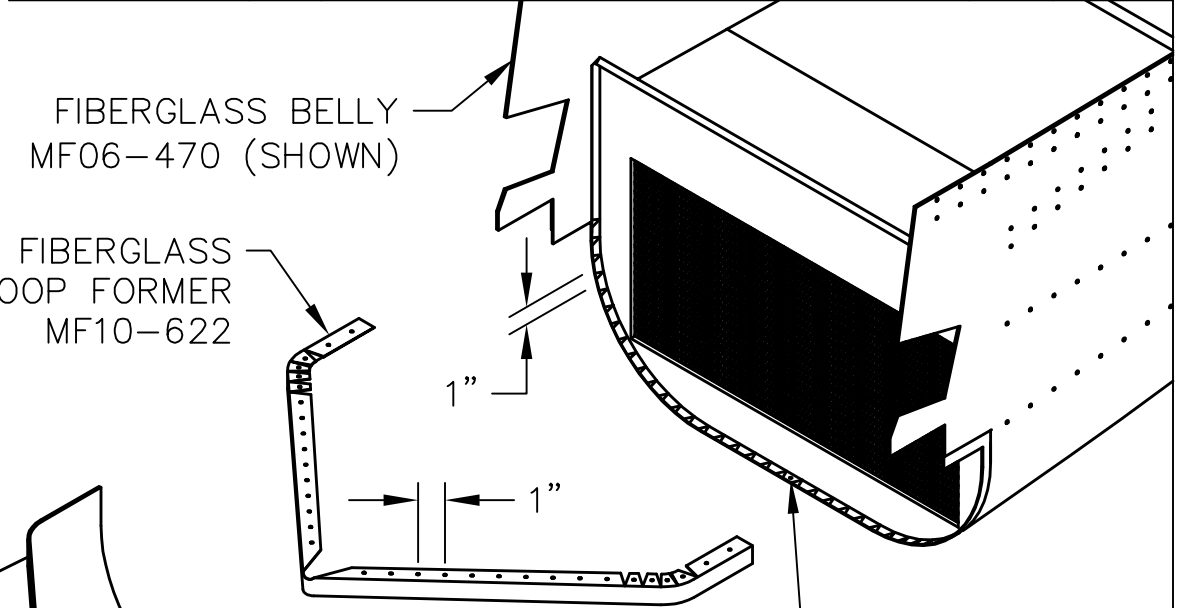


FIBERGLASS SCOOP MF03-133



FIBERGLASS SCOOP FILLER MF10-621

| REVISIONS | | | | |
|-----------|------|------------------|----|------|
| E.C. NO. | REV. | DESCRIPTION | BY | DATE |
| | A | DRAWING RELEASED | BH | 3/10 |
| | | | | |
| | | | | |



FIBERGLASS BELLY MF06-470 (SHOWN)

FIBERGLASS SCOOP FORMER MF10-622

CENTER POINTS

MARK FORMER CENTER POINT HERE ON CENTER SECTION

CUTOUT INLET AREA

TITAN AIRCRAFT SUPPLY
1419 STATE ROUTE 45 SOUTH
AUSTINBURG, OHIO 44010

| | | | | |
|---------------|---------------------|-------------------------------|-----|--|
| DETAIL NAME | | FIBERGLASS SCOOP INSTALLATION | | |
| SCALE | PART NO. | | | |
| ASSEMBLY NAME | | | | |
| PART NO. | DRAWING NO. | | S18 | |
| DRAWING NO. | B T51-10-INS-1884-A | | | |

| | |
|-----------------------|-----------------|
| DRAWN B. HARE | DATE 5/13/10 |
| CHECKED R. INGLE | DATE 7/27/10 |
| APPROVED K. BROOKS | DATE 7/30/10 |

THIS DOCUMENT PROPRIETARY TO TITAN AIRCRAFT, AND IS NOT TO BE USED, CIRCULATED, REPRODUCED, COPIED, OR DISCLOSED IN ANY MANNER WITHOUT PRIOR WRITTEN PERMISSION OF AN AUTHORIZED OFFICIAL OF TITAN AIRCRAFT.