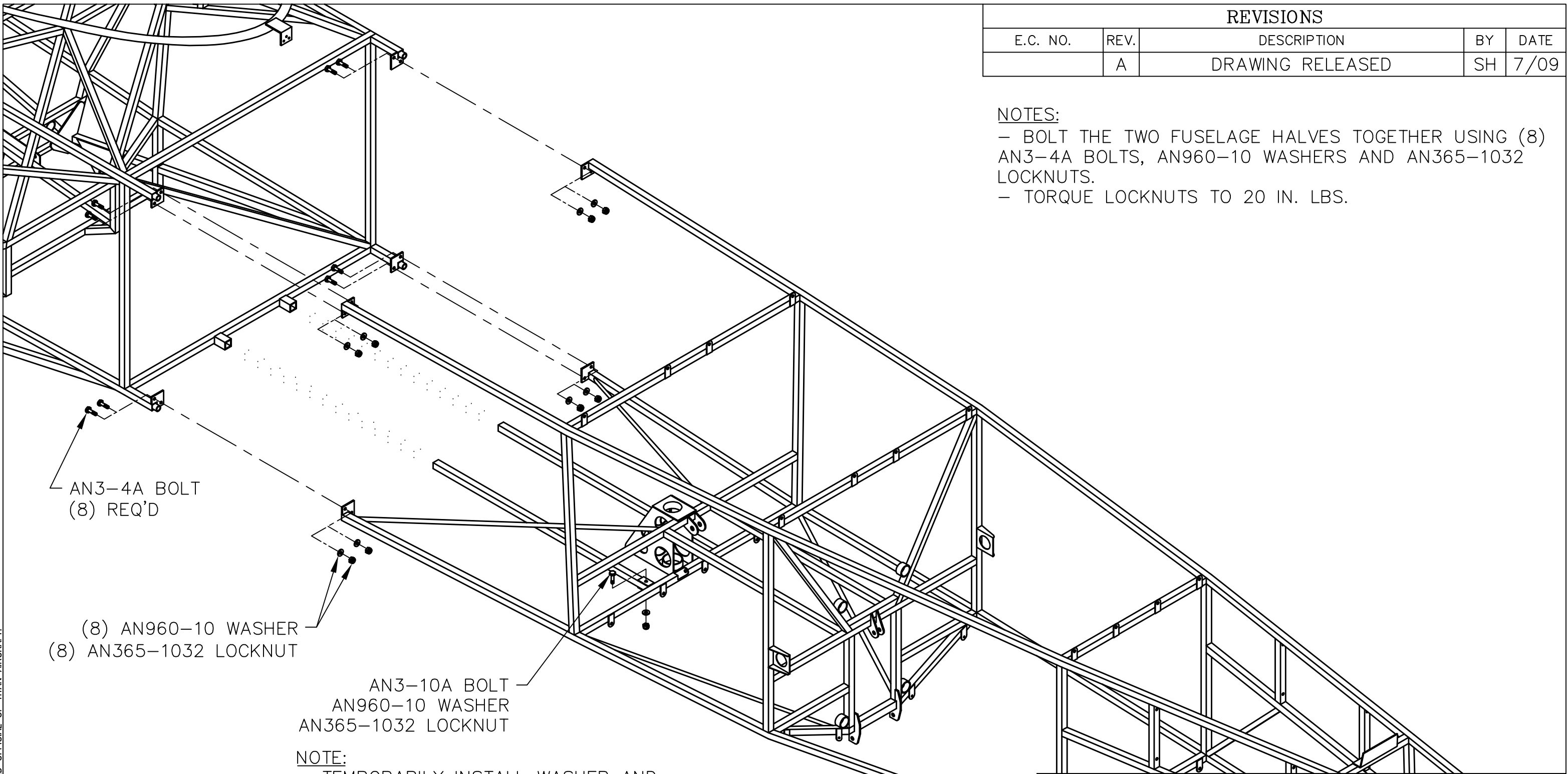


THIS DOCUMENT PROPRIETARY TO TITAN AIRCRAFT, AND IS NOT TO BE USED, CIRCULATED, REPRODUCED, COPIED, OR DISCLOSED IN ANY MANNER WITHOUT PRIOR WRITTEN PERMISSION OF AN AUTHORIZED OFFICIAL OF TITAN AIRCRAFT.



AN3-4A BOLT
(8) REQ'D

(8) AN960-10 WASHER
(8) AN365-1032 LOCKNUT

AN3-10A BOLT
AN960-10 WASHER
AN365-1032 LOCKNUT

NOTE:
 - TEMPORARILY INSTALL WASHER AND LOCKNUT. DO NOT TIGHTEN AT THIS TIME.
 - REFER TO DRAWING T51-03-INS-0811 FOR AN4-23 BOLT INSTALLATION.

REVISIONS				
E.C. NO.	REV.	DESCRIPTION	BY	DATE
	A	DRAWING RELEASED	SH	7/09

NOTES:
 - BOLT THE TWO FUSELAGE HALVES TOGETHER USING (8) AN3-4A BOLTS, AN960-10 WASHERS AND AN365-1032 LOCKNUTS.
 - TORQUE LOCKNUTS TO 20 IN. LBS.


TITAN AIRCRAFT SUPPLY
 1419 STATE ROUTE 45 SOUTH
 AUSTINBURG, OHIO 44010

DETAIL NAME FUSELAGE HALVES MATING INSTRUCTIONS

DRAWN S. HENDERSON	DATE 7/9/09
CHECKED R. INGLE	DATE 1/25/10
APPROVED K. BROOKS	DATE 1/26/10

SCALE N/A	PART NO.
ASSEMBLY NAME	
PART NO.	DRAWING NO. F0.5
DRAWING NO. B T51-09-INS-1847-A	