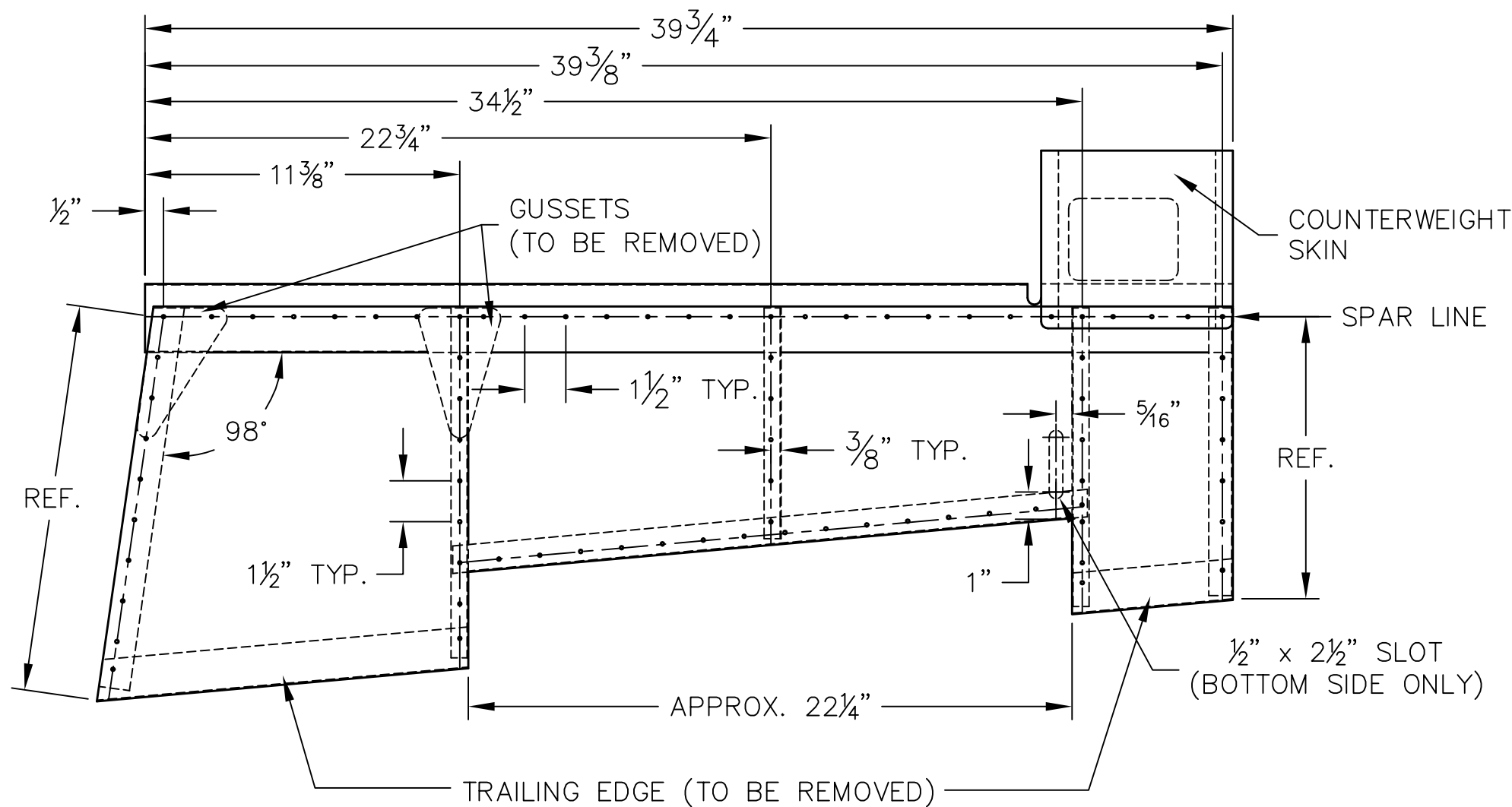


REVISIONS				
E.C. NO.	REV.	DESCRIPTION	BY	DATE
	A	DRAWING RELEASED	SH	4/09
1114	B	ADDED NOTE	BH	1/11

NOTES:

- MEASURE FROM THE SPAR LINE TO THE TRAILING EDGE ON THE INBOARD AND OUTBOARD RIBS. USE THESE DIMENSIONS AS GUIDELINES FOR FITTING AND INSTALLING THE ALUMINUM SKIN (MT06-197).
- REMOVE RIVETS FROM THE TRAILING EDGE OF COUNTERWEIGHT SKIN. ELEVATOR SKINS NEED TO BE OVERLAPPED BY THE COUNTERWEIGHT SKIN.
- REMOVE THE TRAILING EDGE(S) AND THE GUSSETS FROM THE ELEVATOR ASSEMBLIES.
- POSITION THE ELEVATOR SKINS AND LAYOUT RIVET PATTERN ON SKINS, DRILL SKINS AND CLECO IN PLACE.
- DURING FINAL ASSEMBLY BOND AND RIVET SKINS IN PLACE WITH AD42ABS RIVETS AND SD42BS RIVETS ON THE TOP AND BOTTOM SPAR LINES.



RH SHOWN, (LH OPPOSITE  
WITHOUT TRIM TAB)

**TITAN AIRCRAFT SUPPLY**  
 1419 STATE ROUTE 45 SOUTH  
 AUSTINBURG, OHIO 44010

DETAIL NAME ELEVATOR ALUMINUM SKIN INSTALLATION

SCALE  $3/16"=1"$  PART NO.

ASSEMBLY NAME

PART NO. DRAWING NO. 04

DRAWING NO. **B T51-09-INS-1821-B**

DRAWN S. HENDERSON	DATE 4/8/09
CHECKED K. BROOKS	DATE 7/11/11
APPROVED B. KOLENO	DATE 7/19/11